

The Washington State Board of Education

Governance | Achievement | Transitions | Math & Science | Effective Workforce

Old Capitol Building, Room 253
P.O. Box 47206
600 Washington St. SE
Olympia, Washington 98504

Board Members

Updated April 2012

Board Members

<p>Dr. Bernal C. Baca Yakima Appointed 2006.01 Term expires 2013.01</p>	<p>Amy Bragdon Newman Lake Appointed 2006.01 Term expires 2013.01</p>	<p>Eli Ulmer (student) Moses Lake, Student (Eastern Washington) Term expires 2014.05</p>	<p>Cynthia "Cindy" McMullen Spokane Valley Eastern WA, Position 1 WSSDA Elected 2012.01 Term expires 2016.01</p>
<p>Randy Dorn Superintendent of Public Instruction Elected Statewide</p>	<p>Connie Fletcher Issaquah Appointed 2012.01 Term expires 2015.01</p>	<p>Dr. Sheila Fox Bellingham Appointed 2006.01 Term expires 2014.01</p>	<p>Phyllis Bunker Frank Yakima WSSDA Elected, 1998.01 Eastern WA, Position 2 Term expires 2014.01</p>
<p>Bob Hughes Kirkland W SSSA Elected, 2009.01 Western WA, Position 4 Term expires 2013.01</p>	<p>Kevin Laverty Mukilteo Western WA, Position 3 WSSDA Elected 2012.01 Term expires 2016.01</p>	<p>Tre' Maxie Seattle WSSDA Representative via SBE Appointment 2011.07.12 Term expires 2015.01</p>	<p>Dr. Kristina Mayer Port Townsend Appointed 2006.01 Term expires 2015.01</p>
<p>Mary Jean Ryan Seattle Appointed 2006.01 Term expires 2014.01</p>	<p>Judy Jennings Private Schools Representative Term expires 2014.01</p>	<p>Matthew Spencer (student) Woodinville, Student (Western Washington) Term expires 2013.05</p>	<p>Jeff Vincent Bainbridge Island Appointed 2006.01 Term expires 2014.01</p>

Dr. Bernal C. Baca

Yakima

Governor appointed January 2006

Term expires January 2013

Appointed for his second term by Governor Gregoire, Dr. Baca has over 35 years experience as a counselor, teacher, and administrator at both two and four-year colleges. He recently retired from Yakima Valley Community College where he received the Faculty Emeritus Award. While working at the college, Dr. Baca served as Faculty Director of the Office of Recruitment and Retention. His work included the authorship of several grants, bringing million of dollars into the college. Dr. Baca also played an integral part in securing HSI (Hispanic Serving Institution) designation for Yakima Valley Community College.



Dr. Baca's leadership roles extend beyond Yakima Valley Community College. For the Washington Federation of Teachers, Dr. Baca served both as vice president and the Human Rights Chair. Dr. Baca also served as both President and Chief Negotiator for the Yakima Valley Federation of Teachers. He is past President of the Association for Multicultural Counseling and Development (AMCD) and past President for the Washington Counseling Association. Dr. Baca also served as the Board Chair and as executive member of the Board of Directors for EPIC (Enterprise for Progress In the Community), a community non-profit organization.

He served an appointment to the Governor's Affirmative Action Policy Committee for Washington State, the Washington Learns task force, and is a member of the Washington State Office of Superintendent of Public Instruction 'Think Tank' for educating Hispanic students.

Dr. Baca has published articles for local journals, conducted research studies on community college student retention, and has led the momentum to coordinate research and planning of K-14 comprehensive counseling and career development programs in the State of Washington as a co-founder of 'The Washington Center for Research, Evaluation and Development of K-14 Comprehensive Counseling Programs' (RED) Team.

For the past fifteen years, Dr. Baca has worked as a grant reader for the U.S. Department of Education. He is also a certified 'True Colors' facilitator and a 'National Standards' trainer for the American School Counselor Association.

Dr. Baca earned a Doctorate in Educational Leadership (Seattle University, 2000). In addition, he holds Masters degrees in Public Administration (Washington State University, 1981) and Counseling (Seattle University, 1987) as well as a Bachelors Degree in Political Science (University of Colorado, 1975).

He is currently employed as a lobbyist for the American Federation of Teachers-Washington, AFL-CIO.

Amy Bragdon

Newman Lake
Appointed 2006.01
Term expires 2013.01

Appointed by Governor Gregoire, Ms. Bragdon retired from West Valley School District after serving 33 years in education as a teacher and later as an elementary, middle school principal and high school assistant principal. She taught at Eastern Washington University for several years and was recently a member of their Principal Professional Education Advisory Board.



She maintains membership in the state Elementary School Principals Association, Association of Secondary School Principals, and the Washington State Association for Supervision and Curriculum Development, and was elected state President and elected board member of that organization.

She is a former board member of the YMCA in Spokane Valley, and currently on the Board of Directors for Hutton Settlement Children's Home in Spokane. She was recently appointed by the Governor to the Washington Learns Steering Committee, and liaison to the K-12 Advisory Committee.

Eli Ulmer (student)

Moses Lake, Student (Eastern Washington)
Term expires 2014.05

Eli Ulmer is a sophomore at Wilson Creek High School in Wilson Creek, Washington, and is the newest student representative to the Washington State Board of Education. Eli began his term with the Board on May 8-9 during the Board's meeting in Yakima. Eli is the up-coming ASB president of his school and also takes part in activities with the FBLA and FFA programs at his school. "I view this position with respect," said Eli. "I am ready to engage myself in the Board's work." Eli's past experience with different methods of schooling throughout Washington were key factors in his selection. "My position on the Board will allow me to share my voice and perspective which I believe will be an asset not only to the Board but to my community as well."

Cynthia “Cindy” McMullen, JD

Spokane Valley
WSSDA Elected, December 2011
Term Expires January, 2016



Cindy McMullen has been involved in public education since she was first elected to the Central Valley School District board in 1987. During her 24-year tenure on that board, she served as president five times, worked with four superintendents and saw the construction or remodeling of over one-half of the schools in the district. She was an officer on the WSSDA board, serving as its president in 2007. She is currently a member of WSSDA's cadre of professionals called upon to assist school boards who request some guidance. Cindy was named the Spokane YWCA Woman of Achievement in Education in 1997.

Cindy has been practicing law in Spokane since 1978, specializing in Municipal Law. She represents a number of small cities, towns and special purpose Districts. She is a principal in the law firm of McMullen Law Office, P. S. with her husband, Dennis. She is a 30-year member of WSAMA, the state's municipal attorneys association, serving as its president in 2006.

Cindy is a life member of Girl Scouts and a former troop leader. She also served as a board member and vice president of the Eastern WA / N. Idaho Girl Scout Council.

Cindy holds a BA degree in Political Science from Stanford University and a JD degree from Gonzaga School of Law. She and Dennis have three married daughters scattered across the country.

Randy Dorn

Superintendent (Office of the Superintendent of Public Instruction)
Elected Statewide

A lifelong resident of Washington State, Randy Dorn is an experienced educator and dedicated public servant committed to creating world-class schools for all of our children.

Dorn has spent much of his career in education. He received a bachelor's degree in education from the University of Idaho and a master's degree in education from Pacific Lutheran University. He taught at elementary and middle schools and served as elementary and a high school principal.

For seven years he served in the state House of Representatives and was a key sponsor of the Education Reform Bill. As a state representative, Dorn chaired the K-12 House Education Committee and was a member of the Appropriations Committee. His honors include the President's Award from the Association of Washington State School Principals and the Golden Gavel from the Washington Association of School Administrators.

In 1999, Dorn became executive director of Public School Employees of Washington, the second largest educational employee's organization in Washington state.

Dorn and his wife, Kaye, live in Eatonville and have three grown sons. The commitment to education runs deep in Randy's family: one son is a teacher and one is training to become one.



Kevin Lavery

Mukilteo

WSSDA Elected, December 2011

Term expires 2016.01

Kevin Lavery has an extensive background in public education. He was appointed to the Central Valley School District board in February 1993 and served there until moving to Mukilteo in late 1994. In 1999, Lavery was elected to the Mukilteo School District board and served for three terms. He also served on the WSSDA board of directors 2000-02 and was elected WSSDA president in 2010.



In addition to his school board experience, Lavery spent 28 years with Verizon and its predecessor company, GTE, in public relations. He managed the company's Northwest philanthropy for six years which was heavily weighted toward K-20 education. He has been a member of the education funders group of Philanthropy Northwest, a member of the Partnership for Learning steering committee, board member and chair of the Digital Learning Commons, advisory board member for the Coalition of Essential Schools Northwest and a board member and secretary of the Greater Trinity Learning Academy in Everett. He is a past president of the Mukilteo Schools Foundation.

Lavery and his wife, Tomoko, have two grown daughters and reside in Mukilteo. He holds a bachelor's degree in political science from the University of California Santa Barbara, and a Masters in Communication – Digital Media from the University of Washington.

Dr. Sheila Fox

Bellingham
Appointed 2006.01
Term expires 2014.01

Dr. Sheila Fox is a Special Education Professor at Western Washington University, where she serves as Associate Dean of Woodring College of Education.

Dr. Fox began her career in education as a Peace Corps volunteer in Tonga in the South Pacific and taught in special education classrooms in Australia and at the Experimental Education Unit at the University of Washington. She taught university courses in Australia and Canada, before beginning at Western Washington University.



Prior to her appointment to the State Board of Education, Dr. Fox served for six years on the Professional Educator Standards Board. When asked why she volunteers for the State Board of Education, she replied that she believes that P-12 policy ultimately influences the content of educator preparation programs. "We really are one education system with multiple options for students. It's important that we have a coherent vision of education options for our citizens ranging from early childhood through post-secondary education. An educated and civil society depends on that. My educator preparation perspective is one component of a broader vision and that's why I'm honored to be at the table."

Dr. Fox's personal interests include spending time in the Canadian Gulf Islands where she has a seasonal residence on Saturna Island. She reports that numerous deer have discouraged planting a garden there, but that she's nurturing four, fence-protected olive trees. She imagines post-retirement days sitting on the front porch reading novels and eating home-grown olives. No, she doesn't know how to brine them for eating yet, but she says that with library and internet assistance, that will change.

Phyllis Bunker Frank

Yakima

WSSDA Elected, 1998.01

Eastern WA, Position 2 Term expires 2014.01

Mrs. Frank attributes her long-term commitment as a K-12 education policy maker to experience as a parent, mentor of the learning of others, and certificated speech/language pathologist. She served on the Yakima School Board (1985-97) and as president of the Washington State School Directors Association (1995). Mrs. Frank has been affiliated with education reform in Washington since its inception, with the Governor's Council on Education Reform and Funding Learning's Outcomes and Assessment Subcommittee. She was the vice chair of the Goals 2000 Education Improvement Coordinating Council, and a member of the Certificate of Mastery Subcommittee of the State Board. She has a B.S. and M.S. in speech and language pathology from the University of Michigan, with additional study at the University of Washington.



Mrs. Frank's early policy work centered on school, family, and community partnerships as measurable, observable and necessary to successful K-12 education. The work resulted in rewriting model policy and publication of a tool kit for school-family-community partnerships. She is an active proponent of modifying the academic calendar year to offer effective, equitable and efficient use of time to support the learning needs of all children. Mrs. Frank served as chair of the Professional Development & Certification committee and as liaison to the Professional Education Standards Board.

Bob Hughes

Kirkland

WSSDA Elected, 2009.01 WA, Position 4

Term expires 2013.01

Bob Hughes joined the Board in January 2009.

Before retirement, Mr. Hughes worked for The Boeing Corporation in Seattle, spending the last ten years there as the Corporate Director of Education Relations. This position contributed to Mr. Hughes' passion for education, and he found the work at Boeing both professionally and personally rewarding.



Mr. Hughes has extensive experience working on behalf of students in Washington State, including 29 years with the Lake Washington School Board, six years on the Governor's Council on Advanced Technology in Schools, nine years with the Washington Roundtable's Working Committee on Education Reform, and six years as a member of the WSSDA Board of Directors.

Mr. Hughes graduated from Western Washington University with a B.A. in economics. He and his wife Linda have two children and four grandchildren.

Dr. Kristina Mayer

Port Townsend
Appointed 2006.01
Term expires 2011.01

Kristina Mayer, Ed. D., is a specialist in the fields of philanthropy and education. She leads the KLMayer Consulting Group, providing leadership and management strategies for nonprofit organizations and foundations. The firm is located in Port Townsend, Washington, near Seattle. Dr. Mayer has degrees from Seattle University, Gonzaga University, and the Fielding Graduate Institute. Before launching her consulting career, she was a program officer for nearly a decade at both the Stuart Foundation and the Washington Mutual Foundation. Prior to that, she spent twenty years working in education as a school designer, teacher, and principal.



Dr. Mayer's professional accomplishments include developing the Jefferson County Community Foundation, spearheading the Washington Initiative for National Board Certification and co-creating the Center for Strengthening the Teaching Profession. In addition, she has been an active member of many nonprofit organizations dedicated to improving education and supporting philanthropy. She holds emeritus memberships in Philanthropy Northwest, the National Association of Elementary School Principals, and the Association of Washington School Principals. Dr. Mayer is a member of the National Network of Consultants to Grantmakers (NNCG).

Dr. Mayer is a seasoned world traveler. She often combines adventure travel, cultural learning and the application of learning to professional practice. Her concern for the people she has met in developing countries led her to join several Giving Circles to increase economic opportunities in Nicaragua through the use of micro-lending programs and improve safety at a floating hospital on Tonle Sap Lake in Cambodia. Close to home, she has helped to create a community endowment fund and leads an effort to build capacity in the nonprofit agencies in the county where she lives.

Mary Jean Ryan

Seattle

Appointed 2006.01

Term expires 2014.01

Mary Jean Ryan serves as director for the Community Center for Education Results.

The Center works to strengthen and support the growing coalition of organizations, parents and civic leaders who want to dramatically accelerate student achievement — especially in South Seattle and South King County neighborhoods.



Prior to this, Ms. Ryan served as the Director of the City of Seattle's Office of Policy and Management. Her office led many of the City's high-profile policy development and project management efforts such as the Mayor's Children and Youth Strategy, Northgate revitalization, South Lake Union, University of Washington partnership, etc. Prior to that, she was Seattle's Economic Development Director. Mayor Norm Rice hired Mary Jean to create Seattle's Economic Development Office in 1992. Mary Jean has a deep interest in education and workforce development. She currently serves on the Board of the Seattle Jobs Initiative and on the Seattle School District's Community Advisory Committee for Investing in Educational Excellence. Mary Jean served in Washington, D.C., in the Clinton Administration as the Associate Deputy Administrator for Economic Development for the U.S. Small Business Administration. Early in her career she was the Director of the Evergreen Community Development Association (1986-1992). She is a 1988 graduate of the Seattle Chamber/United Way Leadership Tomorrow Program. In 2009 she was awarded the Wales Foundation Passionate Citizenship Honoree Award and was named by Seattle Magazine to its 2009 Most Influential People List.

Mary Jean has a B.A. from Georgetown University and a M.P.A. from the University of Southern California. She is a member of the Georgetown University Athletic Hall of Fame. She has a daughter who attends Pomona College.

Judy Jennings

Bonney Lake
Private Schools Rep.
Appointed: 2012.04.25
Term expires 2014.01

After serving as a language Arts, history, physical education instructor and coach in the Puyallup School District for thirteen years, Judy Jennings left public education to design and implement the Junior High program and curriculum for Puyallup Valley Christian School (now Cascade Christian Schools) in 1982.



In 1988, Judy became the Secondary Principal for Seattle Christian Schools and served in that capacity until 1992 when she became Superintendent. During her tenure there she led the effort in receiving the schools' first accreditation through NAAS/ ACSI, built a new campus, and strengthened the curriculum to include both special education and AP classes. Upon retiring from SCS in 2005, Mrs. Jennings became the Executive Director of the Washington Federation of Independent Schools, where she had served as a Board member representing ACSI schools for 9 years prior to her appointment. In her capacity as Executive Director, Judy also represented the private schools of Washington to the Council for American Private Education (CAPE) lobbying in both Washington, D. C. and Olympia.

During her educational career, Judy also served in many professional capacities. She was a member of the ACSI Accreditation Commission, President of the Nisqually League 89-92, Representative to WCD 3 for the Nisqually League from 1990-2005 and its president in 94-95, WIAA Board Member from 1995-2005 and President in 96-97. Judy also served as a board member of National Federation of High School Associations from 2001-2005 representing 11 western states. Judy has also been a long time member of Rotary International, serving as president of her club from 96-97.

Mrs. Jennings hold an undergraduate degree in education as well as a Master's Degree in Administrative Leadership, both from Pacific Lutheran University. She is also a certified administrator for the Association of Christian Schools International.

Mrs. Jennings lives in Bonney Lake and has been married to her husband, Fran, for 46 years. They have two children and four grandchildren.

Jeff Vincent

Bainbridge Island
Appointed 2006.01
Term expires 2014.01

Jeff Vincent is the Chief Executive Officer and President of the Laird Norton Company LLC. He leads the Laird Norton investment team in the oversight of current investments, the development of new investment opportunities, and in the day-to-day management of Company activities. Jeff joined the Laird Norton Company LLC in January of 2001. Jeff has more than 30 years of business experience in such roles as CEO, CFO, and corporate development officer. During the last two decades, he worked with privately held family companies where he developed a fundamental understanding of how to successfully manage these types of entities.



Jeff also built a solid operating background, especially in the area of manufacturing and distribution. In his various positions, he has restructured business operations, bought and sold more than 15 companies, and developed several strategic partnerships. Jeff likes his current challenge of leading Laird Norton, a company with 156 years of history, forward into the 21st century.

Jeff received his BSBA from Drake University, summa cum laude, and received his MBA from the Harvard Business School where he was a Baker Scholar. Upon graduating from the Harvard Business School, he was a consultant with McKinsey and Company.

Matthew Spencer

Woodinville, Student (Western Washington)
Term expires 2013.05

Matthew is the current western Washington student Board representative. Matthew is hopeful that his insights will help the Board as they continue to work on behalf of K-12 students. "I will have the opportunity to provide the perspective of a student who experiences educational reform policies and requirements daily," said Matthew.

Matthew is an active and involved member at Woodinville High School. As an honors student, Matthew excels in the classroom, taking difficult classes such as Advanced Placement World History and honors math. He is also involved in a variety of extra-curricular activities, including Woodinville High School athletics, the National Honor Society, and volunteering through his church.

Matthew's interest in educational law is well-suited to his future duties as the Board's newest member. For Matthew, "Gaining firsthand experience in what will possibly become my career is an exciting prospect."

Tre' Maxie

Seattle

Appointed 2011.07.12

Term Expires: 2014.01



Tre' is currently the Executive Director of Powerful Schools, where he led the non-profit through a recent strategy and capacity building phase that has resulted in a refreshed mission statement, revised success indicators, modernized infrastructure, expanded programs, and a new pre-school program.

He has spent over a decade leading non-profits focused on the development of children and youth in public schools. Tre' previously worked on the staff of a U.S. Member of Congress. In this position, he focused primarily on increasing the graduation rates and college preparedness among underrepresented youth.

Tre' is a global advocate for education equity and his efforts have not gone unnoticed. Tre' was selected as a 2009 '40 Under 40 Honoree' by the Puget Sound Business Journal and was recently appointed by Seattle Mayor Mike McGinn and the Seattle City Council to the Families and Education Levy Advisory Committee.

Tre' currently serves on the Board of Directors for NW Next Leaders Council, Tupac Shakur Foundation, and is on the Seattle Advisory Council for Seattle School of Theology & Psychology.

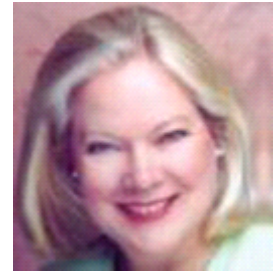
Tre' has a B.A. in Political Science Pre-law from Morehouse College and a certificate in Creating Business Strategy from Columbia University Extension School in Tokyo. Tre' earned a certificate from the Non-Profit Executive Leadership Institute at the Evans School of Public Affairs at the University of Washington and is a graduate of the 2011 Class of Leadership Tomorrow Seattle.

Connie Fletcher

Issaquah

Appointed 2012.01

Term Expires 2015.01



Connie Fletcher was first appointed to the Board in September 2009 and then again by Governor Gregoire in 2012.

Ms. Fletcher holds significant experience in educational leadership and policy. Before joining the Board, Ms. Fletcher spent 16 years as part of the Issaquah School Board, serving as both president and legislative representative.

From 2000-2003, Ms. Fletcher served as an officer in the Washington State School Directors' Association. In addition to leading WSSDA as president, she chaired WSSDA's Achievement Gap Task Force.

Ms. Fletcher and her husband, Jim, have four grown children and three grandchildren, and reside in May Valley, south of Issaquah.