

PRESENTATION BY TRUMAN HIGH SCHOOL ON APPLICATION FOR WAIVER FROM CREDIT-BASED GRADUATION REQUIREMENTS

SUMMARY OF POLICY ISSUE /STATE BOARD OF EDUCATION (SBE) STRATEGIC PLAN GOALS

The Board may grant waivers to school districts from the credit-based high school graduation requirements and the Basic Education Act Program Requirements (RCW 28A.150.200 through 28A.150.220) on the basis that such waivers are necessary to implement successfully a local plan to provide for all students in the district an effective education system that is designed to enhance the educational program for each student (RCW 28A.305.140).

BACKGROUND

The Board will be considering applications for waivers from credit-based high school graduation requirements and the Basic Education Act requirements at the Board Meeting:

Application for Waiver from Credit-Based High School Graduation Requirements

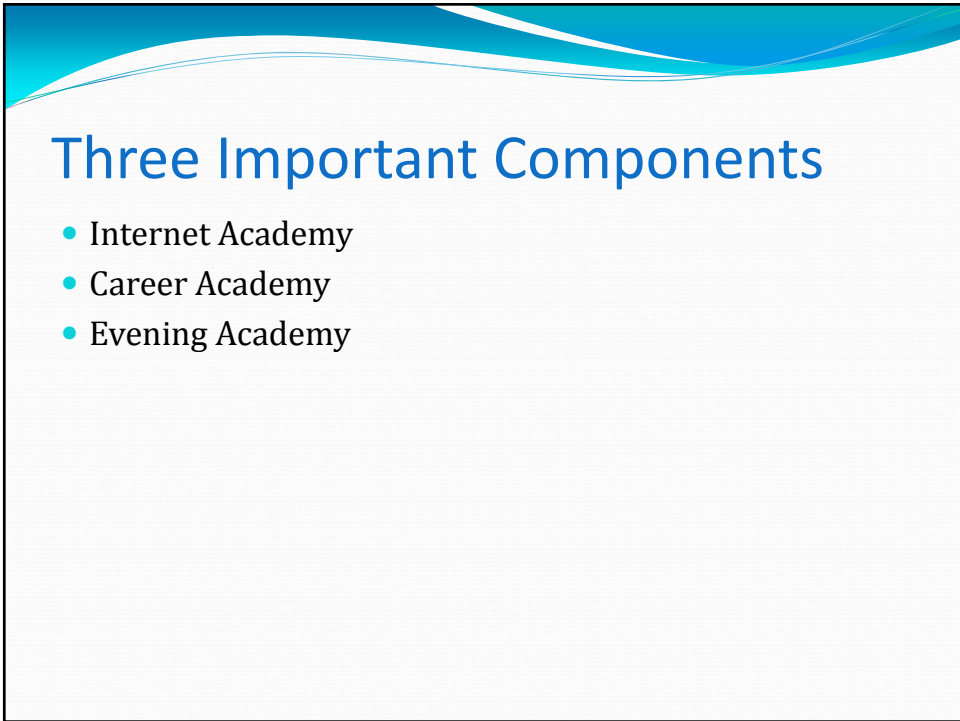
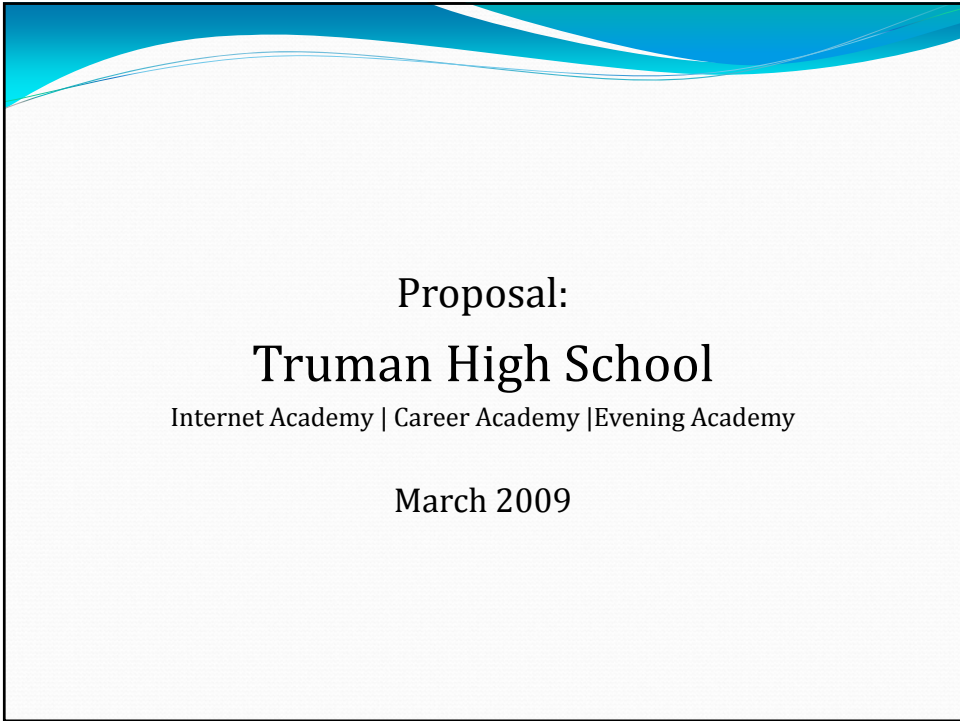
Truman High School, in the Federal Way School District, is requesting a waiver from credit-based high school graduation requirements for the 2009-10, 2010-11, 2011-12, and 2012-13 school years, the maximum number of years allowed for a waiver. This is a renewal application. The waiver request meets Washington State's school reform vision, as stated in the State Board of Education's rules, specifically "shifting from a time and credit-based system of education to a standards and performance-based education system." The request is to continue the previous decision to waive letter grades and Carnegie units as a means of determining academic achievement for students. Truman High School's standards-based system, established in 2002, provides a window through which students can see their true achievement levels as they relate to real world challenges and community expectations. Students are able to explore their interests, follow their passion and learn academic skills while developing their plans after high school. Truman High School's system requires students to demonstrate proficiencies as outlined by the Washington State Essential Academic Learning Requirements and the Grade Level Expectations in order to graduate.

Truman High School incorporates a small-school teaching environment and students remain with their teachers until graduation. All upper-level students participate in internship experiences weekly with a community mentor through the school's active

partnerships with community businesses. Core academic Grade Level Expectations and Career and Technical Education Program Standards are imbedded into the internship experiences using a system of standards based on rubrics to align the students' work. Student-led conferences occur twice a year and student learning plans are written by teachers, parents, and students to guide the students' academic development. Students and staff use the Washington State Essential Academic Learning Requirements and the Grade Level Expectations to ensure that the state's four learning goals are met.

EXPECTED ACTION

The Board will approve Truman High School's application for a waiver from the credit-based graduation requirements.



Internet Academy

- Our current program would move from its current location to Truman High School
- IA would continue to maintain a separate budget supporting itself through student enrollment of in-district and out of district through FTE and Tuition
- IA's principal would oversee the IA program and the two new proposed academies at Truman High School

Career Academy

- Some important elements of the current Truman High School program will stay the same:
 - Portfolio Based non-credit bearing
 - Student Internships
 - Job Shadows
 - Small school environment
 - Career Emphasis and support planing

Career Academy

- Portfolio Waiver
 - Current waiver will expire June 2009
 - Required to continue the portfolio non-credit bearing component of the current Truman program or the proposed Career Academy
 - Expected presentation for State Board March 2009

Career Academy

- The Career Academy at Truman High school will provide education and internship opportunities in a variety of professional fields.
 - Human Services
 - Health Sciences
 - Science, Technology, Engineering and Mathematics
 - Architecture and Construction
 - Business Management and Administration
 - Marketing, Sales and Service
 - Auto Technology (NATEF)

Career Academy

- Students will receive education in the core curriculum covered by the Washington State graduation requirements and be fully prepared for the state assessments in:
 - Language Arts
 - Science
 - Mathematics
 - Social Studies

Career Academy

- Students will engage in a small school environment allowing them to be well known by staff and academically advised accordingly. Each student will build an individual path toward professional preparation and high school graduation.

Career Academy

- Admissions:
 - Current Truman students will easily integrate into this new improved model.
 - New students will be recruited from our comprehensive high schools.
 - Students will be admitted during the school year on an ongoing basis (open enrollment).

Career Academy

- Level 1 - Freshmen and Sophomores will:
 - prepare for the WASL
 - explore career pathways
 - create a portrait of their interests and talents in order to direct them toward their career goals for this program

Career Academy

- Transitioning between Level 1 and Level 2:
 - meets standard on the Reading and Writing WASL assessments
 - meets standard in Algebra I
 - meets standard in academic areas in the student portfolio

Career Academy

- Transitioning between Level 1 and Level 2:
 - Portfolio Review –
 - The determination for passing is based on a comprehensive review of the core work and completion of the career guidance program for Level 1.

Career Academy

- Level 2 - Juniors and Seniors
 - During the junior and senior years, students will continue toward completion of the Washington State graduation requirements.
 - Students may attend Running Start or other comparable programs in order to meet these goals.
 - Students may pursue industry recognized certificate bearing programs at any of our high schools in Federal Way.

Career Academy

- Students will receive:
 - academic support to pursue their chosen career pathway
 - Internships
 - job shadows
 - cooperative work experience and other community-based learning opportunities.

Career Academy

- Student schedules will be tailored to allow travel to:
 - Local community colleges
 - Technical schools
 - Other high schools in FWPS
 - Occupational training settings
 - Local businesses
 - Hospitals
 - Training sites for the trades
 - Others as individual needs require

Career Academy

- Staff will be flexible professionals.
- Staff will understand as they work together and commit to professional dialogue, students will be well served.
- Staff will be trained in specific learning strategies for students of poverty who are expected to excel academically and participate in professional environments.

Career Academy

- School Calendar:
 - The Career Academy at Truman will follow the regular Federal Way Public School calendar for high schools to enable enrollment in preparatory program options.

Career Academy

- Transportation:
 - Transportation will be maintained to and from the Truman Center at its current level.
 - Level 2 students who participate in programs at other educational or community sites will access public transportation or provide their own transportation.

Evening Academy

- Open second semester 2009-2010
- Staffed with math and English teachers
- Blended online opportunities for students
- Monday-Thursday – early evening hours

Informational Opportunities

- February 13 and 24 at Truman
 - During the school day
 - Consultation
 - Portfolio Review
 - Etc.



Questions?

- Carol Matsui – 253-945-2030
- Ron Mayberry – 253-945-2243
- Nancy Hawkins – 253-945-5742