

# Required Action Process



**MS. LINDA DRAKE,  
RESEARCH DIRECTOR**

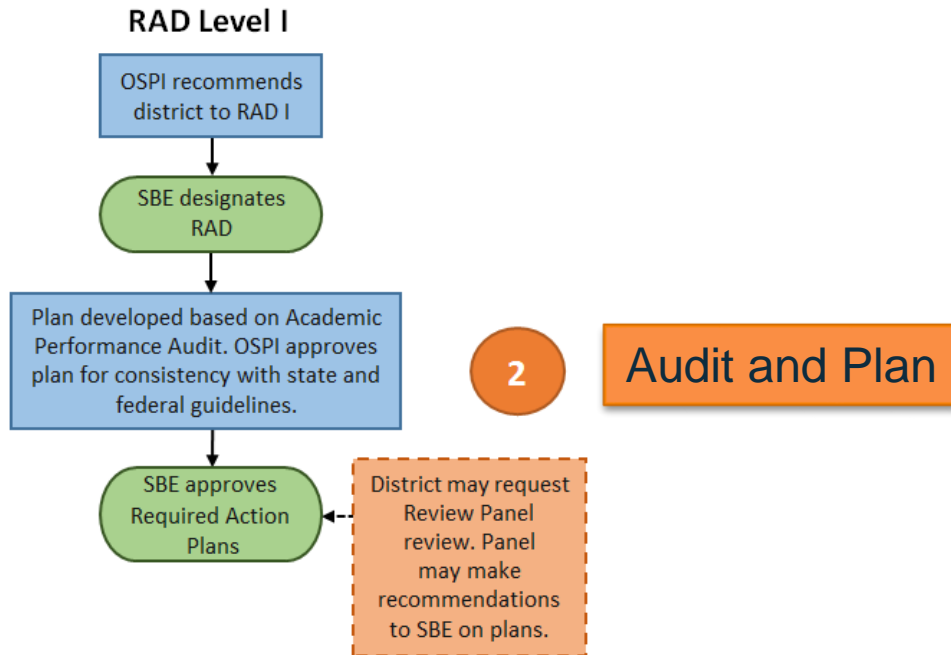
**MARCH 5, 2014**



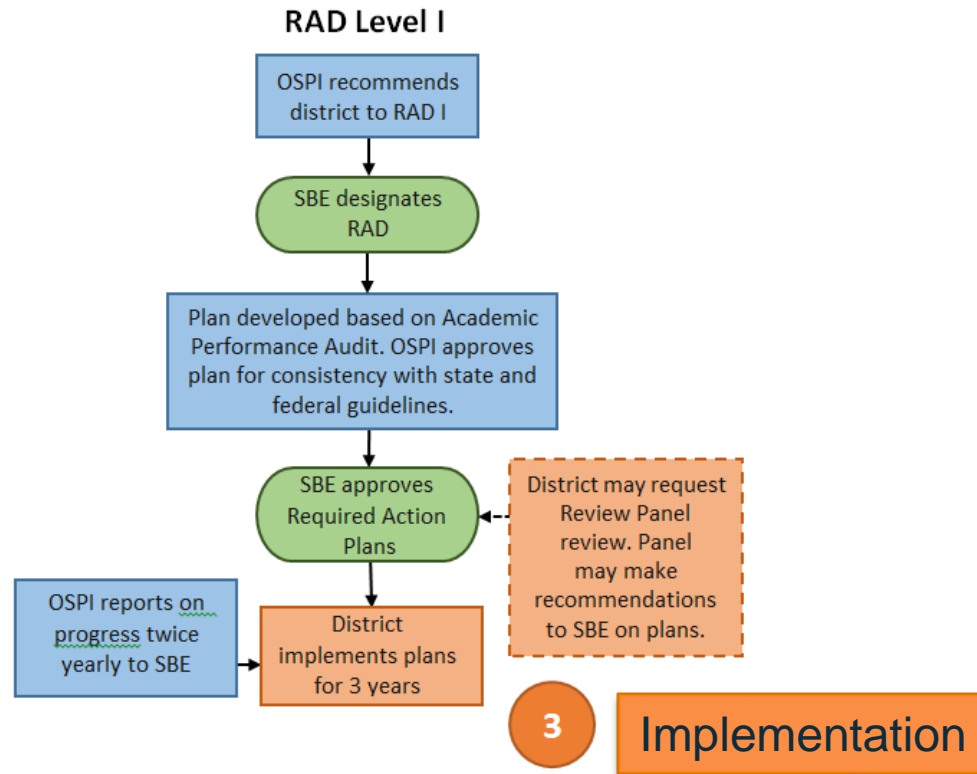
# Step by Step Required Action Process



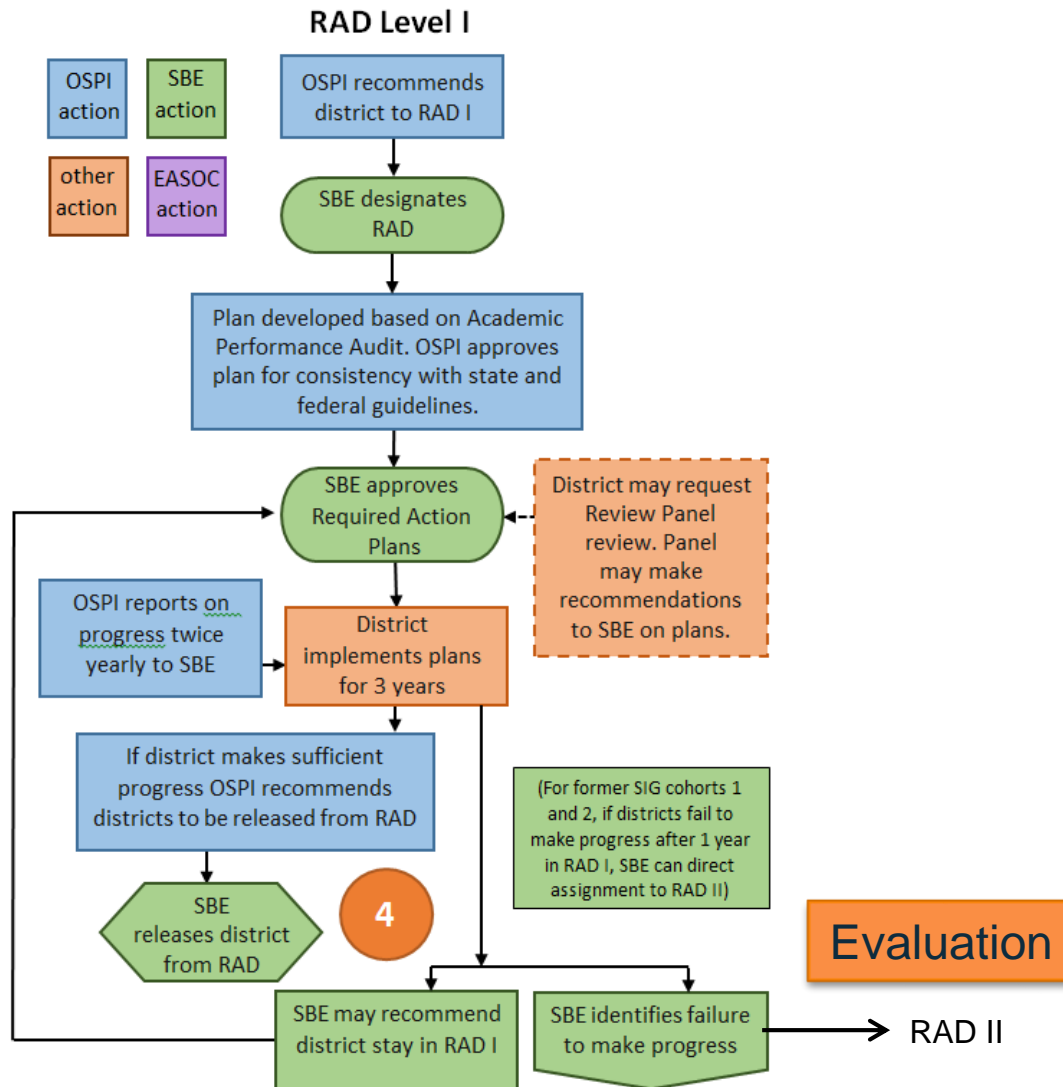
# Step by Step Required Action Process



# Step by Step Required Action Process



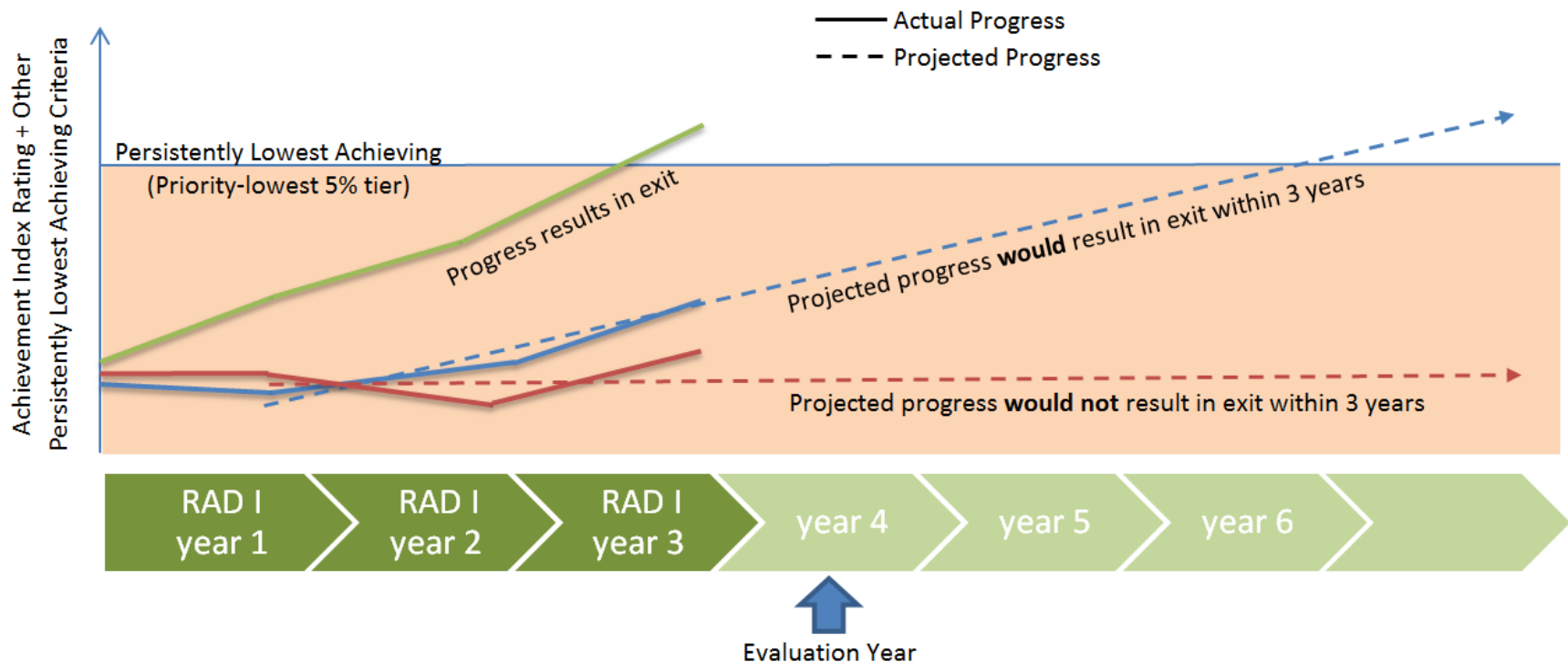
# Step by Step Required Action Process



# Recent and Significant Progress: Assignment to Level II Required Action



*Have you made enough progress in the last two years to be on track for exit?*



# Next Steps



## March Meeting

- Designate districts to required action based on recommendation by OSPI.
  - Teachers' perspectives.
  - OSPI will recommend districts; Board will hear from district administrators.
- Approve letter to Superintendent Dorn on Accountability System

## May Meeting

- Findings of academic performance audits/approve required action plans.
- Provide consultation to OSPI on guidelines for required action plans.
- Report from OSPI on current RADS.

## July Meeting

- If not approved prior, required action plan approval.



# Today:



- Four schools recommended for required action.
- Two middle schools, two elementary schools.
- Total enrollment in these schools is currently about 1,750.
- Average free or reduced-price lunch in these four schools: 84%.
- The highest percent met standard in 2013 in any grade in any of these schools for either reading or math 52%; lowest 6%.



# Resources



- Website: [www.SBE.wa.gov](http://www.SBE.wa.gov)
- Blog: [washingtonSBE.wordpress.com](http://washingtonSBE.wordpress.com)
- Facebook: [www.facebook.com/washingtonSBE](http://www.facebook.com/washingtonSBE)
- Twitter: [www.twitter.com/wa\\_SBE](http://www.twitter.com/wa_SBE)
- Email: [sbe@sbe.wa.gov](mailto:sbe@sbe.wa.gov)
- Phone: 360-725-6025

