

High School Assessments

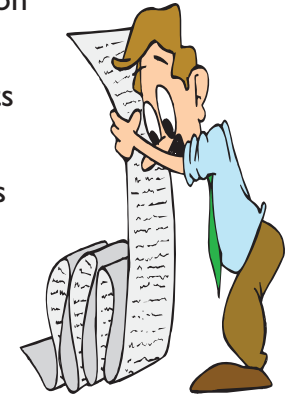
State Board Meeting
September 10, 2014



OFFICE OF SUPERINTENDENT OF PUBLIC INSTRUCTION
Division of Assessment and Student Information

Today's Topics

- ▶ Brief History of High School Assessment
- ▶ Impact of Assessment Requirements on Graduation Rates
- ▶ Assessment Graduation Requirements by Cohort
- ▶ General Assessments and Alternatives
- ▶ Issues Faced as We Transition to Smarter Balanced
- ▶ Superintendent Dorn's Proposals



OFFICE OF SUPERINTENDENT OF PUBLIC INSTRUCTION



September 10, 2014 | Slide 2

Brief History of High School Assessments

- ▶ Washington Assessment of Student Learning:
 - ▶ 1999 HS Reading, Writing, and Math; 2003 HS Science
- ▶ 2009 – Changed to High School Proficiency Exams; shortened tests
- ▶ 2011 – Changed from comprehensive math to 2 end-of-course exams (year 1 math, year 2 math)
- ▶ 2012 – Changed from comprehensive science to end-of-course exam in biology
- ▶ 2015 – Smarter Balanced transition for ELA and math



OFFICE OF SUPERINTENDENT OF PUBLIC INSTRUCTION



September 10, 2014 | Slide 3

Brief History of HS Assessments, cont'd

- ▶ Washington Assessment of Student Learning
 - ▶ Grade 10 used for accountability
- ▶ End-of-Course (math and biology)
 - ▶ Grade 10 still used for accountability (scores roll to Grade 10)
- ▶ Smarter Balanced (ELA and math)
 - ▶ Grade 11 will be used for accountability
 - ▶ Need 95% participation and 100% proficiency to meet AYP

OFFICE OF SUPERINTENDENT OF PUBLIC INSTRUCTION



September 10, 2014 | Slide 4

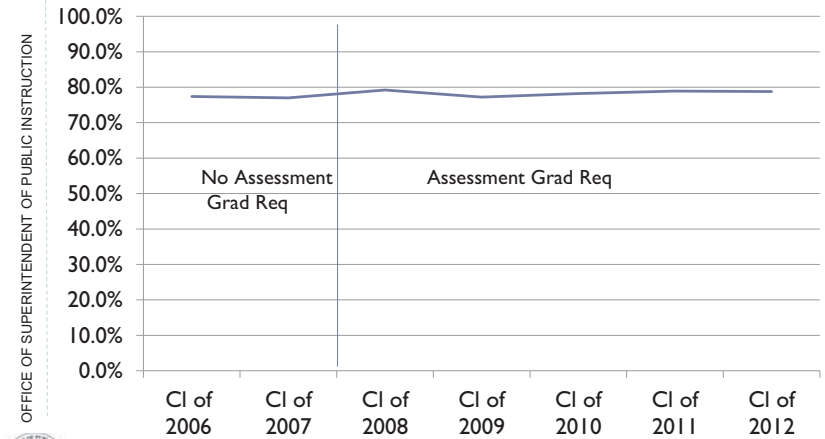
Brief History of HS Assessments, cont'd

- ▶ First graduating class to have to pass assessments
 - ▶ Reading – 2008
 - ▶ Writing – 2008
 - ▶ Math – ~~2008~~ 2013
 - ▶ Science – ~~2013~~ 2015

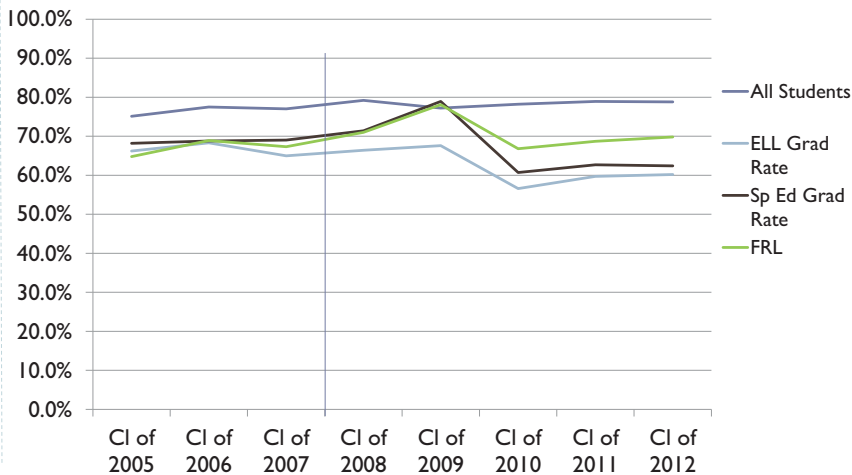


Impact of Assessment Graduation Requirements on Graduation Rates

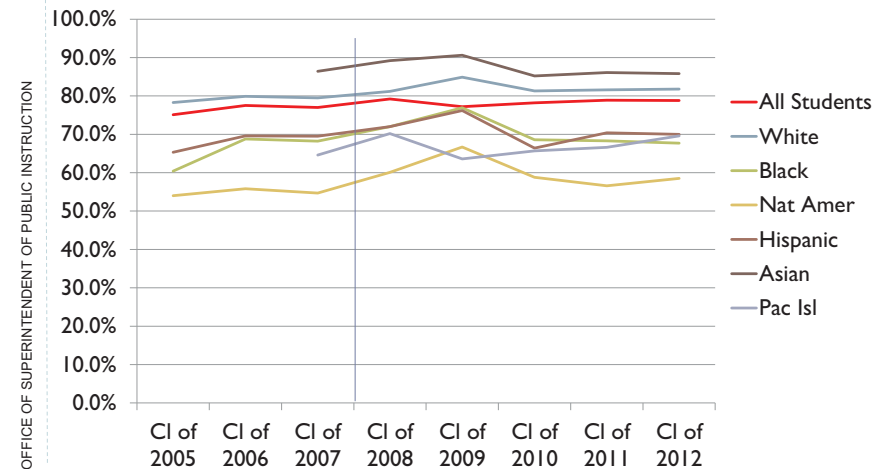
5 Year Graduation Rate



Impact of Assessment Graduation Requirements on Graduation Rates



Impact of Assessment Graduation Requirements on Graduation Rates



High School Assessment Graduation Requirements Vary by 'Class of' Cohort

Class of...	English Language Arts		Mathematics	Science
2014	Reading HSPE	Writing HSPE	Either Algebra or Geometry EOC	
2015 & 2016	HSPEs or ELA Exit Exam or 11 th Smarter Balanced		Either Algebra or Geometry EOC or EOC Exit Exam ¹ or 11 th Smarter Balanced	Biology EOC (until Next Gen Science Standards)
2017 & 2018	ELA exit exam or 11 th Smarter Balanced			
2019 and beyond	11 th Smarter Balanced ELA		11 th Smarter Balanced Math	

▶ ¹EOC Exit Exam refers to math assessments based on CCSS-items

Summative Assessments 2014–15 and beyond

	English/LA	Mathematics	Science (no change)
Grade 3	Smarter	Smarter	
Grade 4	Smarter	Smarter	
Grade 5	Smarter	Smarter	MSP
Grade 6	Smarter	Smarter	
Grade 7	Smarter	Smarter	
Grade 8	Smarter	Smarter	MSP
Grade 10 (or below for EOCs) (until Class of 2019)	Comprehensive ELA exit exam	Year 1 or Year 2 EOC exit exam	EOC Biology exit exam (until NGSS)
Grade 11	Smarter	Smarter	
Grade 11 or 12 (class of 2015 & 2016)	HSPE Reading and/or Writing Retake		

Smarter=Smarter Balanced Assessment; MSP=Measurements of Student Progress; EOC=End of Course exams; HSPE=High School proficiency Exam

Assessment Menu – Mathematics

General Assessments

- ▶ Smarter Balanced 11th Grade Math
- ▶ Year 1 and Year 2 EOC Exit Exams

Alternatives

- ▶ Collection of Evidence
- ▶ College Entrance Scores
 - ▶ SAT,ACT,IB,AP
- ▶ Out-of-State Tests
- ▶ Grades Comparison
- ▶ Recent Transfer Waiver
- ▶ Special Education Alternatives

Assessment Menu – English Language Arts

General Assessments

- ▶ Smarter Balanced 11th Grade ELA
- ▶ 10th Grade ELA Exit Exams
- ▶ HSPE in Reading and Writing (retakes for 11th and 12th graders)

Alternatives

- ▶ Collection of Evidence
- ▶ College Entrance Scores
 - ▶ SAT,ACT,IB,AP
- ▶ Out-of-State Tests
- ▶ Grades Comparison
- ▶ Recent Transfer Waiver
- ▶ Special Education Alternatives

Assessment Menu - Science

General Assessments

- ▶ Biology EOC Exam (until new NGSS Science exam is developed)

Alternatives

- ▶ Collection of Evidence
- ▶ College Entrance Scores
 - ▶ IB, AP
- ▶ Out-of-State Tests
- ▶ Grades Comparison
- ▶ Recent Transfer Waiver
- ▶ Special Education Alternatives

How Assessment Requirements Were Met – All Students: Class of 2014 – 12th Graders* (as of Aug 20, 2014 CEDARS)**

	Reading		Writing		Mathematics	
	#	%	#	%	#	%
Total Met Standard	65,835	94.5%	65,830	94.5%	64,109	92.1%
Via HS Proficiency Exam/End of Course	59,719	85.8%	61,037	87.6%	55,268	79.4%
Via Washington Alternative Assessments (Special Education)	3,505	5.0%	3,066	4.4%	4,499	6.5%
HSPE/EOC-Basic	1,264	1.8%	1,440	2.1%	1,025	1.5%
WAAS Developmentally Appropriate Proficiency Exam	1,483	2.1%	691	1.0%	2,365	3.4%
WAAS Portfolio	595	0.9%	595	0.9%	606	0.9%
Locally Determined Assessments	163	0.2%	340	0.5%	503	0.7%
Collection of Evidence - Basic	0	0%	0	0%	0	0%
Via Certificate of Academic Achievement Options	1,743	2.5%	930	1.3%	3,404	4.9%
Collection of Evidence	1,200	1.7%	605	0.9%	2,372	3.4%
PSAT/SAT/ACT/AP	539	0.8%	324	0.5%	1,006	1.4%
Grades Comparison	4	0%	1	0%	26	0%
Via Special Waiver	868	1.2%	797	1.1%	938	1.3%
Out-of-State Waivers	857	1.2%	788	1.1%	925	1.3%
Awareness Level Waivers (Special Education)	9	0%	7	0%	8	0%
Special Circumstance Appeals	2	0%	2	0%	5	0%
Tested: Not Met Standard	1,243	1.8%	1,266	1.8%	3,146	4.5%
No score	2,563	3.7%	2,545	3.7%	2,386	3.4%
TOTAL	69,641	100%	69,641	100%	69,641	100%

* Math Year 2 Collection of Evidence had not been scored at the time of this report. This would increase meeting standard only by up to 79 students or approximately one-tenth of one percent maximum.

**High School Graduation Requirement for students in the Class of 2014 is to meet standard on the reading and writing assessments and at least one math assessment.

How Reading Assessments Were Met by Subgroups: Class of 2014 – 12th Graders (as of August 20, 2014 CEDARS)*

READING Assessment	% All Students	% Sp Ed	% ELL	% FRL
Total Met Standard	94.5%	93.3%	77.8%	94.0%
Via HS Proficiency Exam/End of Course	85.8%	37.3%	35.4%	80.0%
Via Washington Alternative Assessments (Special Education)	5.0%	53.4%	15.9%	8.4%
HSPE/EOC-Basic	1.8%	18.8%	4.4%	2.8%
WAAS Developmentally Appropriate Proficiency Exam	2.1%	22.6%	9.4%	3.8%
WAAS Portfolio	0.9%	9.5%	1.1%	1.4%
Locally Determined Assessments	0.2%	2.5%	1.0%	0.4%
Collection of Evidence - Basic	0%	0%	0%	0%
Via Certificate of Academic Achievement Options	2.5%	1.9%	25.1%	4.1%
Collection of Evidence	1.7%	1.5%	21.8%	3.2%
PSAT/SAT/ACT/AP	0.8%	0.4%	3.2%	0.9%
Grades Comparison	0%	0%	0.1%	0%
Via Special Waiver	1.2%	0.7%	1.4%	1.5%
Out-of-State Waivers	1.2%	0.6%	1.3%	1.4%
Awareness Level Waivers (Special Education)	0%	0.1%	0%	0%
Special Circumstance Appeals	0%	0%	0.1%	0%
Tested: Not Met Standard	1.8%	4.5%	18.7%	3.3%
No score	3.7%	2.2%	3.4%	2.7%
TOTAL	100%	100%	100%	100%

*High School Graduation Requirement for students in the Class of 2014 is to meet standard on the Reading and Writing Assessments and at least one Math Assessment.

How Writing Assessments Were Met by Subgroups: Class of 2014 – 12th Graders (as of August 20, 2014 CEDARS)*

WRITING Assessment	% All Students	% Sp Ed	% ELL	% FRL
Total Met Standard	94.5%	91.7%	79.1%	94.2%
Via HS Proficiency Exam/End of Course	87.6%	43.6%	53.3%	83.7%
Via Washington Alternative Assessments (Special Education)	4.4%	46.7%	12.7%	7.1%
HSPE/EOC-Basic	2.1%	21.4%	6.0%	3.2%
WAAS Developmentally Appropriate Proficiency Exam	1.0%	10.6%	3.5%	1.7%
WAAS Portfolio	0.9%	9.5%	1.1%	1.4%
Locally Determined Assessments	0.5%	5.2%	2.1%	0.9%
Collection of Evidence - Basic	0%	0%	0%	0%
Via Certificate of Academic Achievement Options	1.3%	0.7%	11.8%	2.0%
Collection of Evidence	0.9%	0.7%	10.9%	1.6%
PSAT/SAT/ACT/AP	0.5%	0.1%	0.9%	0.4%
Grades Comparison	0%	0%	0%	0%
Via Special Waiver	1.1%	0.6%	1.3%	1.4%
Out-of-State Waivers	1.1%	0.5%	1.2%	1.3%
Awareness Level Waivers (Special Education)	0%	0.1%	0%	0%
Special Circumstance Appeals	0%	0%	0.1%	0%
Tested: Not Met Standard	1.8%	6.2%	17.3%	3.2%
No score	3.7%	2.1%	3.6%	2.6%
TOTAL	100%	100%	100%	100%

*High School Graduation Requirement for students in the Class of 2014 is to meet standard on the reading and writing assessments and at least one math assessment.

How *Math* Assessments were met by subgroups:
Class of 2014-12th Graders (as of August 20, 2014 CEDARS)*

MATH Assessment	% All Students	% Sp Ed	% ELL	% FRL
Total Met Standard	92.1%	90.5%	77.8%	90.1%
Via HS Proficiency Exam/End of Course	79.4%	19.7%	43.7%	70.9%
Via Washington Alternative Assessments (Special Education)	6.5%	68.2%	15.1%	10.1%
HSPE/EOC-Basic	1.5%	15.0%	3.1%	2.1%
WAAS Developmentally Appropriate Proficiency Exam	3.4%	35.8%	8.3%	5.5%
WAAS Portfolio	0.9%	9.6%	1.0%	1.4%
Locally Determined Assessments	0.7%	7.7%	2.8%	1.2%
Collection of Evidence - Basic	0%	0%	0%	0%
Via Certificate of Academic Achievement Options	4.9%	2.1%	17.1%	7.5%
Collection of Evidence	3.4%	1.6%	14.3%	5.8%
PSAT/SAT/ACT/AP	1.4%	0.4%	2.7%	1.7%
Grades Comparison	0%	0.1%	0%	0%
Via Special Waiver	1.3%	0.6%	1.9%	1.6%
Out-of-State Waivers	1.3%	0.5%	1.8%	1.6%
Awareness Level Waivers (Special Education)	0%	0.1%	0%	0%
Special Circumstance Appeals	0%	0%	0.2%	0%
Tested: Not Met Standard	4.5%	7.5%	19.2%	7.5%
No score	3.4%	2.0%	3.0%	2.4%
TOTAL	100%	100%	100%	100%

*High School Graduation Requirement for students in the Class of 2014 is to meet standard on the Reading and Writing Assessments and at least one Math Assessment.

September 10, 2014 | Slide 17

2015 results will set a new baseline of student performance in Washington

- ▶ Some people are predicting that the spring 2015 test results will see Washington students falling off a “performance cliff” with scores dropping.
- ▶ But the new tests are not comparable so we should not compare scores from one to the other.
- ▶ We have a new baseline!



September 10, 2014 | Slide 18

2015 results, cont'd

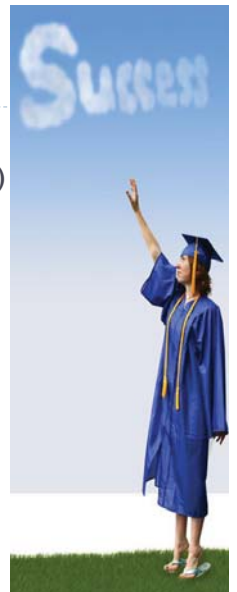
- ▶ Think of the standards and the assessment as a new target with new results.... I envision two mountains:



- ▶ People who successfully climb Mt. Rainer (at 14,000 ft), will find Mt. McKinley (at 20,000 ft) more challenging.
- ▶ Some will be able to meet the challenge, some will be close and some who previously were able to summit Rainier will not be able to summit McKinley at first.

Issues as We Transition:
General Assessments

- ▶ CCSSO advice on exit exams
 - ▶ Designed for that purpose (Rainier vs McKinley)
 - ▶ Opportunity to learn
 - ▶ Alternatives
- ▶ Purpose of Smarter Balanced Assessments
- ▶ 2nd cut score
 - ▶ For 2019 or for 2015, 2016, 2017, 2018?
 - ▶ When to set, how to set, how to communicate?
- ▶ 10th grade ELA exit exam
 - ▶ Test map, item availability
 - ▶ Paper vs. online



September 10, 2014 | Slide 20

Issues as We Transition: Alternatives

- ▶ **Collection of Evidence**
 - ▶ Math Year 1 vs Math Year 1 & Math Year 2
- ▶ **Out-of-State Tests**
 - ▶ For purposes of accountability or exit exam
 - ▶ Any grade level
- ▶ **Grades Comparison**
 - ▶ Single course content: Biology and Year 1 or 2 Math
 - ▶ 3.2 Overall GPA
- ▶ **College Entrance for Biology EOC**

September 10, 2014 Slide 21

Superintendent Dorn's Proposals

- ▶ **Plan A: Eliminate assessment graduation requirements**
 - ▶ Use Common Core and Next Generation Science Standards to prepare students for college and career.
 - ▶ Use Smarter Balanced assessments in grades 3–8 and 11 to signal if students, teachers and systems are on track for graduating students college and career ready.
 - ▶ Use the 11th grade tests as a “Green, Yellow, Red” indicator of services/instruction needed in senior year.
 - ▶ Switch resources used for testing retakes and alternatives for passing exit exams on direct instruction and preparation of students.

September 10, 2014 Slide 22

Superintendent Dorn's Proposals

- ▶ **Plan B: Update and streamline options to fulfill assessment graduation requirements**
 - ▶ **Collection of Evidence in Math** – Reduce to just Year 1 math (eliminate Geometry COE)
 - ▶ **Out-of-State Test** – Must be test used for accountability or exit exam in the other state
 - ▶ **Grades Comparison** – Eliminate minimum GPA for access to this alternative
 - ▶ **Additional HS Credit (1.0) in Content Area** – Add this new alternative
 - ▶ **College Credit in Content Area** – Add this new alternative
 - ▶ **Transfer Waiver** – Change date of transfer to January 1 of senior year (from March 1)

September 10, 2014 Slide 23

