

ESSA Accountability System

PREPARED FOR THE STATE BOARD OF EDUCATION

MARCH 8, 2017



Workgroup plan with SBE coordination

ESSA timeline

Accountability Systems Workgroup and TAC tasks

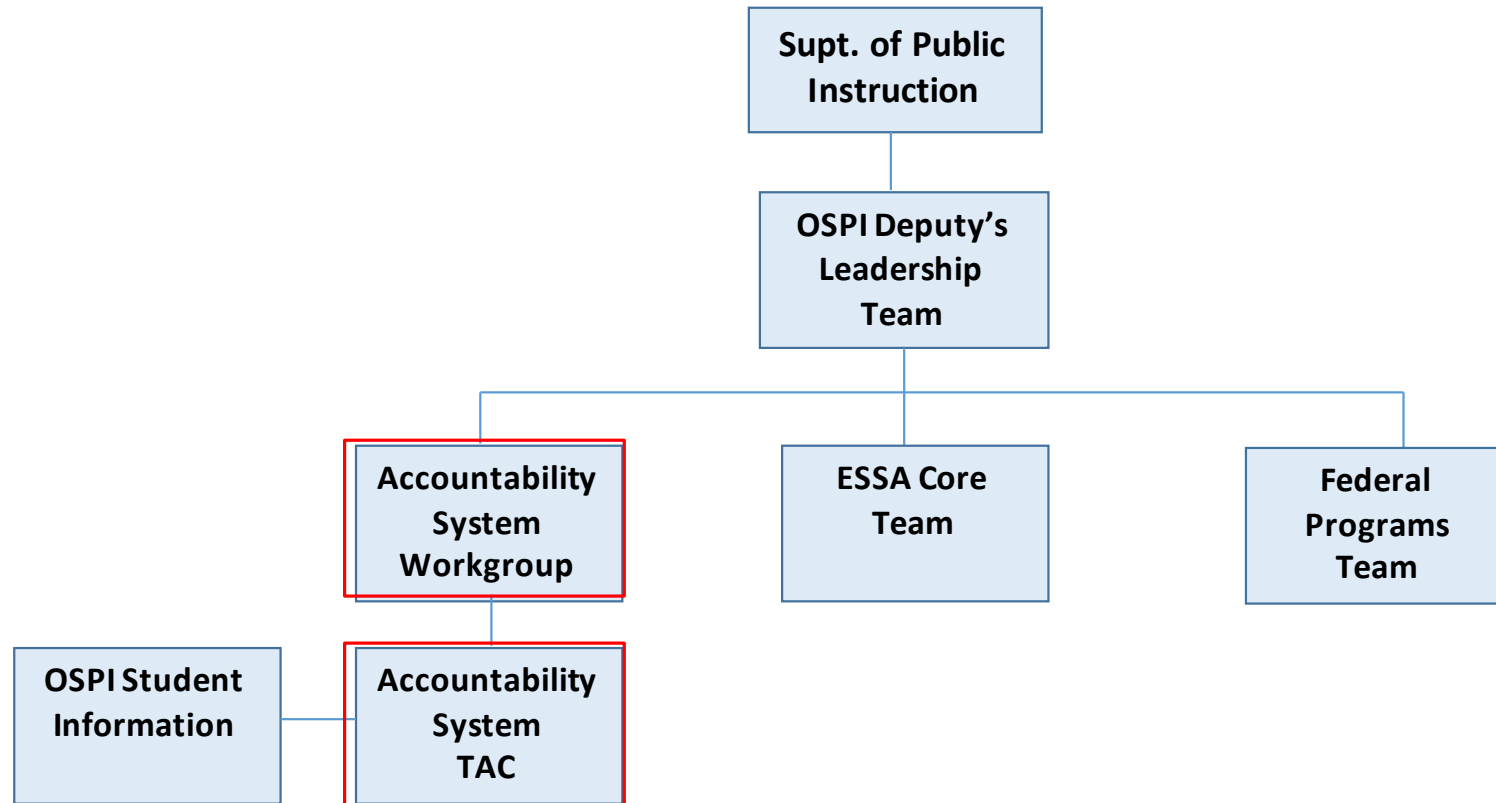


ESSA Structure

Organizational Chart for Implementation of ESSA Consolidated Plan

DRAFT

February 9, 2017



ESSA Timeline

March

- SBE
- ASW (3/29)

May

- SBE
- ASW webinar
- TAC

July

- SBE
- Public review

Sept

- Submit (9/18)

April

- TAC

June

- ASW (6/22)
- TAC

Aug

- Public review
- Revisions



ASW Tasks

- 1) Identifying tier labels of school performance
- 2) Identifying state-determined actions for schools that do not meet the 95 percent participation rate on assessments
- 3) Refining the metric (index) for meaningfully differentiating schools (TAC)



TAC Tasks

- English learner progress measure
- Weighting of indicators
- Inclusion of targeted subgroups



Accountability

Academic Indicators

School Quality or Student Success

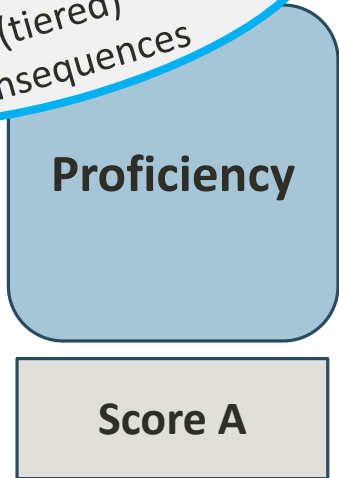
	Academic Indicators		
Elementary	Proficiency	Growth	English Learner Progress
Middle School	Proficiency	Growth	English Learner Progress
High School	Proficiency	Graduation Rate	English Learner Progress

Chronic Absenteeism
Chronic Absenteeism
Chronic Absenteeism
9 th Graders on Track
Advanced Course-Taking (dual credit)

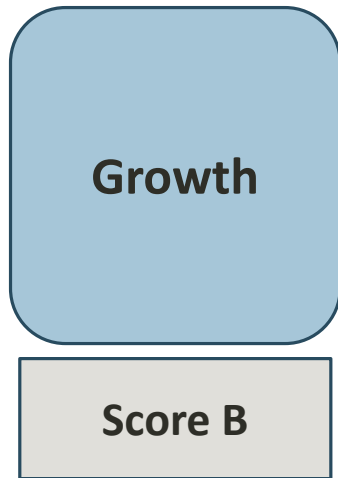


Calculating the Index

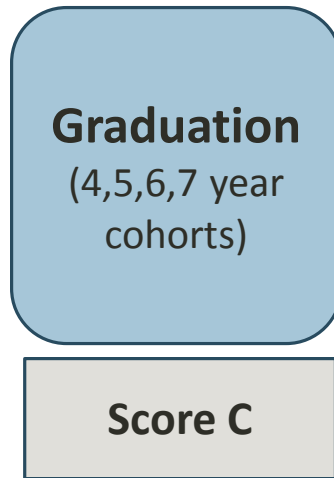
Participation rate
(tiered)
consequences



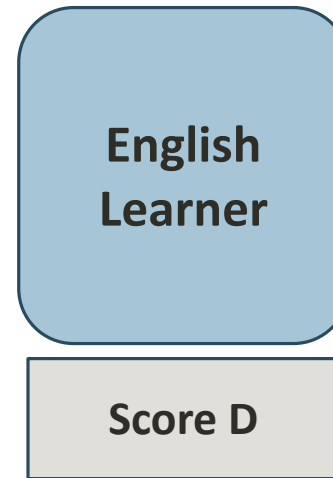
Wt1



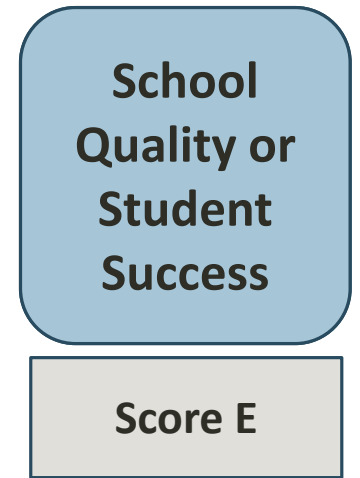
Wt2



Wt3



Wt4



Wt5

Need to determine balance (weighting) of All Students score and the Targeted Subgroups score

Annual Meaningful Differentiation. Scores will be 1-10 for each measure and summative. But we need to determine **tier names**

Single Summative Rating

Sum Score



TAC Approach

Consistency

Transparency

Objectivity

Briefing paper(s):

- Description of the problem
- Pros / cons
- 2-3 scenarios (options)
- Recommendation



SBE feedback appreciated



Contacts:

Michaela Miller, Ed.D.

Deputy Superintendent, OSPI K-12 Education

Office: 360-725-6310

Email: Michaela.Miller@k12.wa.us

Deb Came, Ph.D.

Assistant Superintendent, Assessment and Student Information, OSPI

Office: 360-725-6336

Email: Deb.Came@k12.wa.us

