

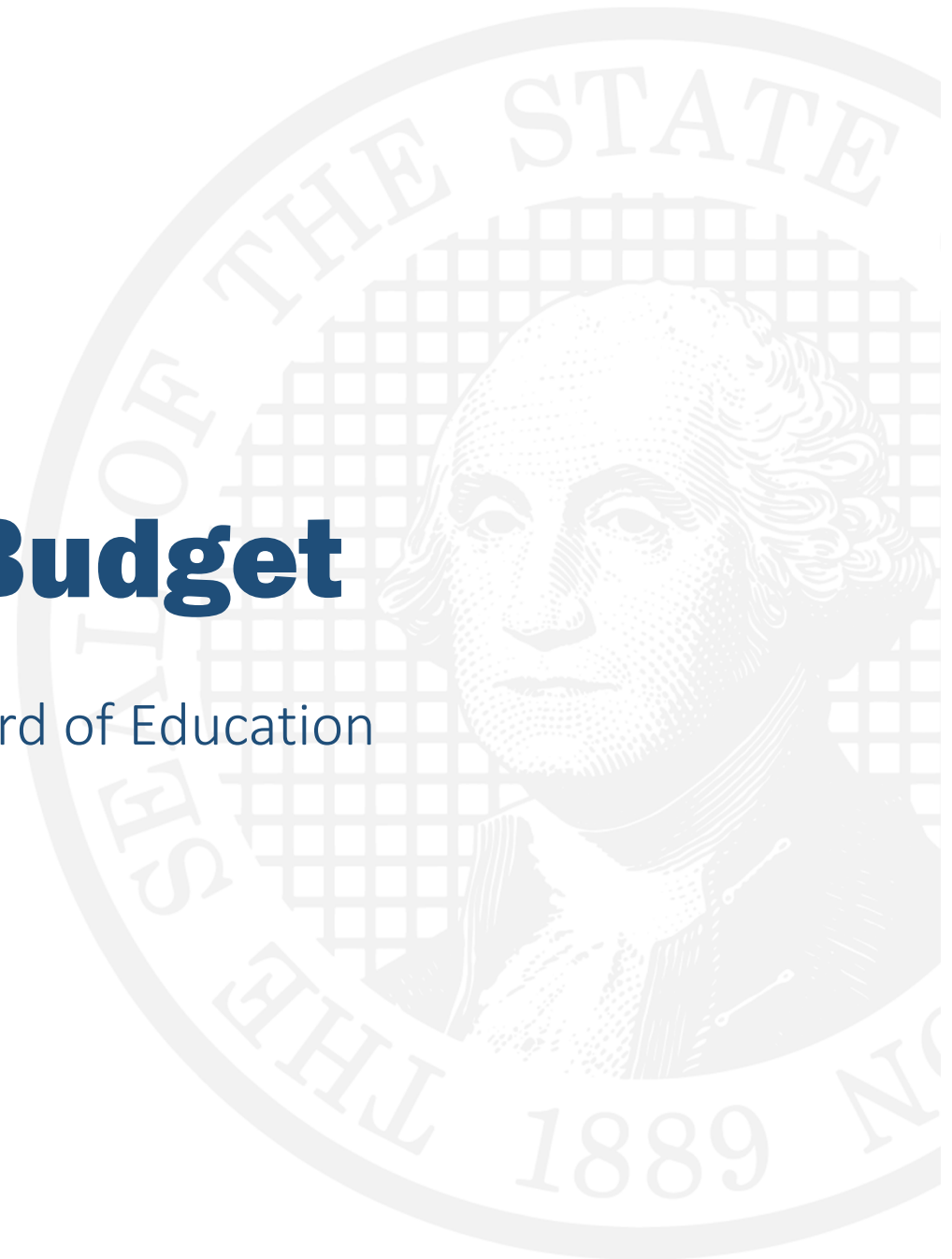
January 9, 2019

# Overview: Governor's Education Budget

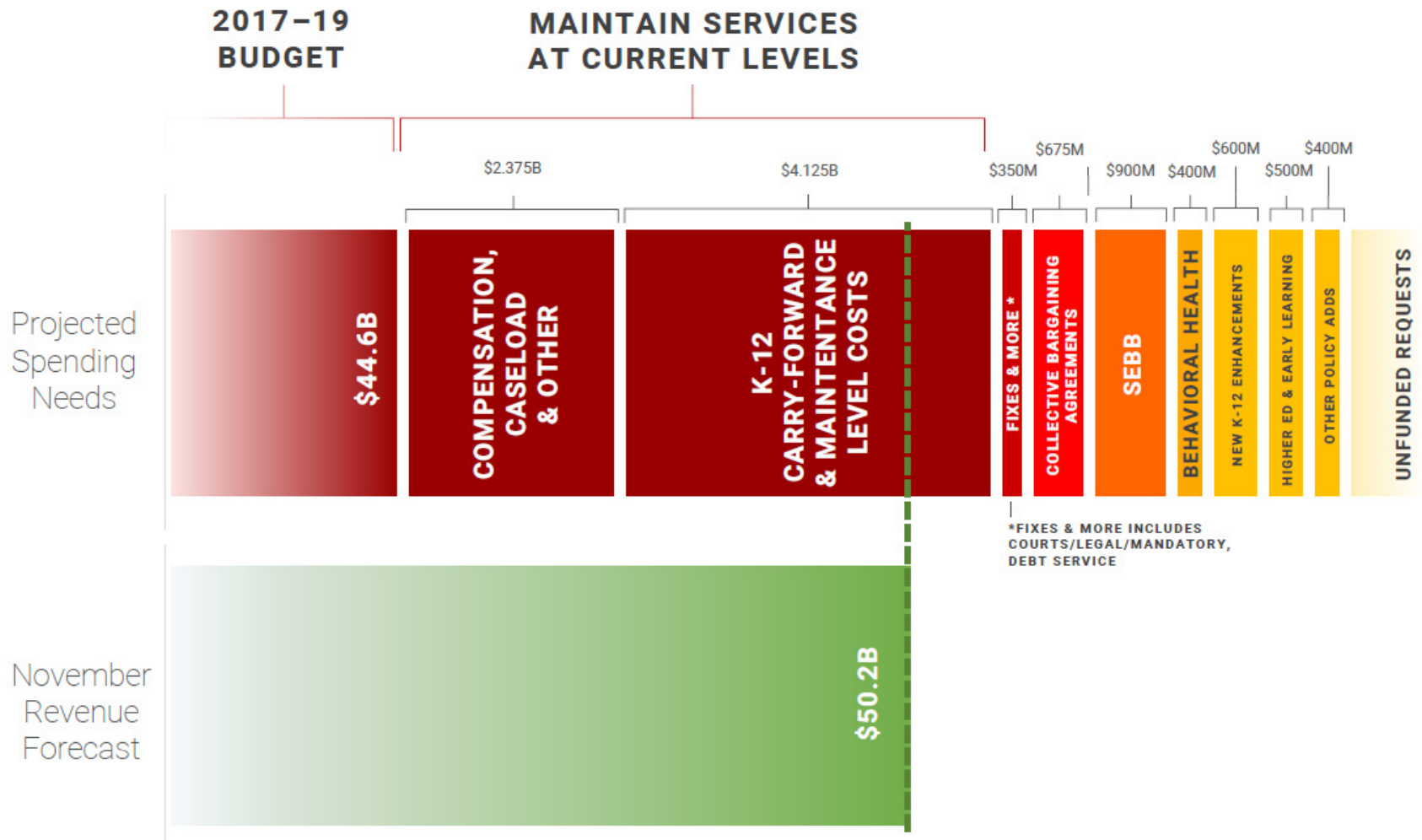
Briefing for the State Board of Education

**OFM**

OFFICE OF FINANCIAL MANAGEMENT



# BUDGET NEEDS, OBLIGATIONS, & REVENUE PROJECTIONS



# SCHOOL EMPLOYEE HEALTH BENEFITS

---



**Over 200,000**  
*employees and dependents covered*

*An estimated 145,000 employees and their dependents will be eligible for the new School Employee Benefits Board Program.*



**630 hours**  
*work requirement for eligibility*

*Extends benefit eligibility to more of our bus drivers, food service workers, and paraeducators.*



**Full benefits**  
*for all eligible employees*

*Every eligible, enrolled employee receives full funding for health benefits in the state-wide system.*



**Funding parity**  
*employer funding is at least equal to PEBB*

*Monthly funding for a school employee is required to be at least equal to that of a state employee.*

*SB 6241, 2018*

# INVESTMENTS IN INSTRUCTIONAL EQUITY

---

## **Special education**

\$ 146 million

- Restructures the special education excess cost multiplier to target increased funding to student need
- Increases safety net funding for the students with the greatest needs to align with special education funding tied to McCleary
- Supports WA State Institute for Public Policy to study equity and outcome-based approaches to special education provision and funding

---

## **Enhanced funding for institutional education**

\$ 6 million

Provides a funding enhancement to support differentiation of instruction to meet students' unique educational needs in institutional environments

---

## **Dual language grant and system expansion**

\$ 3.3 million

Spanish language learning standards development, funding for Seal of Biliteracy exam fees, expansion of grants for dual language programs

---

## **Competency-based diploma development**

\$ 0.2 million

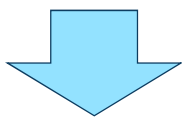
Funds the State Board of Education to convene stakeholders to develop recommendations for a competency-based diploma framework

# STUDENT MENTAL HEALTH AND SCHOOL SAFETY

---

## **Statewide Coordination at OSPI**

\$ 1 million

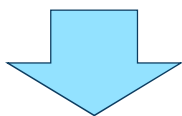


- Coordinate and support behavioral health regions
- Continue and expand existing mental health, suicide prevention, and school safety efforts at OSPI

---

## **Regional Support at ESDs**

\$ 6 million



- Provide Behavioral Health System Navigators for each ESD
- Provide staff for safe schools planning & threat assessment program development at each ESD
- Funding for grants to districts to implement these systems

---

## **Local Access at school districts**

\$ 155 million

- Increased allocations for nurses, social workers, psychologists, and counselors in elementary and middle schools beginning with highest poverty school districts

# INCREASED LEVY AUTHORITY

## Reinstate and streamline old levy system:

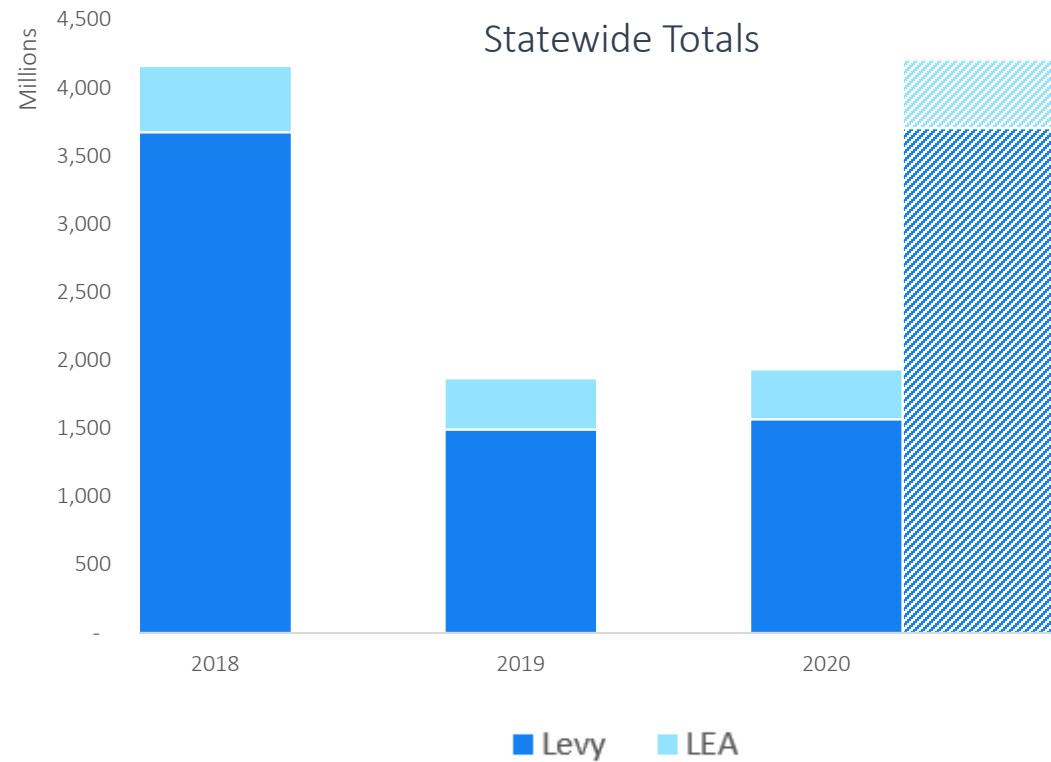
- 28% of Levy Base
- Equalizes to half of levy authority
- Eliminates ghost revenue calculations
- Eliminates hold harmless levy authority above 28%

### Levy impact:

More than doubles statewide levy authority from that under the current system.

### LEA impact:

Increases LEA by around \$140 million per calendar year for 2020 and 2021.



# CAREER CONNECTED LEARNING

---

## Regional Networks

\$53 million

Coordinate & develop scalable career launch curriculum

Regional leads and grants to develop and scale career launch curriculum.

*Key connection between business and education sectors.*

## New Enrollments & Tuition Support

\$23 million

Create and grow career launch enrollments and apprenticeships

Fill 50% tuition waiver for 'Career Launch' endorsed programs and fund new 'Career Launch' enrollments. Adds 14,000 new enrollments over four years, doubling the number of 'career launch' programs.

## System Oversight & Credential Value

\$13 million

Improve credit transfer and coordinate new programs.

Funds staffing, data collection and measurement, campus career launch programs, system oversight, career launch resources. Data collection, dedicated staffing, and system oversight will ensure successful implementation. Includes funding to support development of equivalency frameworks for CTE courses to count toward general education graduation requirements.

## Equity Supports

\$4.5 million

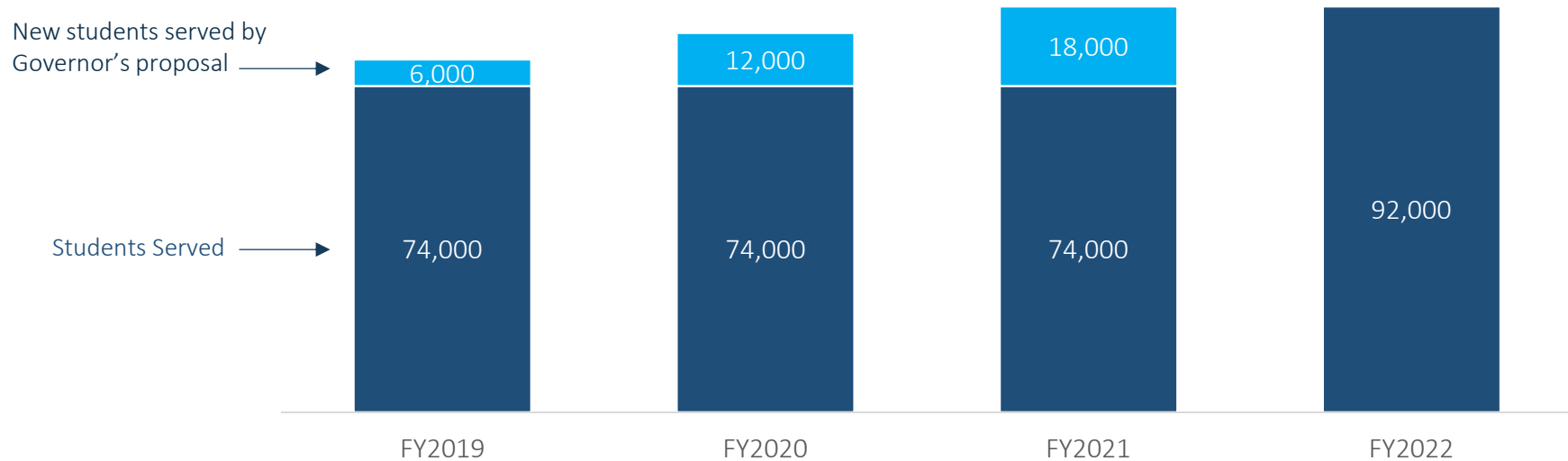
Expand Dual Credit & CTE opportunities for K-12 schools

Increase College in the High School, Career and Technical Education dual credit, and Tech prep programs for students from low-income families. Increases opportunities for students to earn college credit while in high school, which improves post-secondary success and reduces student debt. Allows districts to claim up to 1.2 FTE for CTE students to help pay for after school and summer school CTE courses.

# WASHINGTON COLLEGE PROMISE

\$ 103 million

- Guarantees Washington College Promise Scholarship to all eligible students by academic year 2021-2022
- Serves an additional 18,000 students for 92,000 students total
- Creates a forecasted program



- ✓ Free Tuition & Fees for lowest income - **guaranteed**
- ✓ Partial Tuition & Fees for low-income - **guaranteed**
- ✓ Available to undergraduate students and apprentices
- ✓ Use at community college, four-year institution or apprenticeship
- ✓ Stackable with other aid to cover books, housing, supplies and higher education costs
- ✓ Decreases financial barriers to access
- ✓ Improves student success and completion





# FOR MORE INFORMATION:

Cynthia Hollimon

360.902.0562

[cynthia.hollimon@ofm.wa.gov](mailto:cynthia.hollimon@ofm.wa.gov)

[ofm.wa.gov](http://ofm.wa.gov)

## OFM

OFFICE OF FINANCIAL MANAGEMENT

