



THE WASHINGTON STATE BOARD OF EDUCATION

An education system where students are engaged in personalized education pathways that prepare them for civic engagement, careers, postsecondary education, and lifelong learning

COVER: CHARTER PUBLIC SCHOOLS

Prepared for the July 2019 Board Meeting

Information and action item.

As related to:

- Goal One:** All students feel safe at school, and have the supports necessary to thrive.
- Goal Two:** All students are able to engage in their schools and their broader communities, and feel invested in their learning pathways, which lead to their post-secondary aspirations.
- Goal Three:** School and district structures and systems adapt to meet the evolving needs of the student population and community, as a whole. Students are prepared to adapt as needed and fully participate in the world beyond the classroom.

- Goal Four:** Students successfully transition into, through, and out of the P-12 system.
- Goal Five:** Students graduate from Washington State high schools ready for civic engagement, careers, postsecondary education, and lifelong learning.
- Goal Six:** Equitable funding across the state to ensure that all students have the funding and opportunities they need, regardless of their geographical location or other needs.
- Other**

Materials included in packet:

- Charter School Commission PowerPoint Presentation
- State Board of Education PowerPoint Presentation
- Roster of Washington state charter public schools

Synopsis and Policy Considerations:

SBE's Director of Policy and Partnerships and the Chair of the Washington State Charter School Commission (CSC) will provide the Board with information related to Washington's charter school environment, SBE's and CSC's key statutory duties and functional roles related to charter public school authorizing and oversight, some facts about authorized, opening, and closing charter schools around the state, and answer Board member questions related to these topics.

SBE has ongoing duties related to charter public schools, including an annual report – done in collaboration with CSC – outlining schools' performance and our analysis of the state legal and fiscal charter school related issues.

WASHINGTON STATE CHARTER SCHOOL COMMISSION

WASHINGTON STATE CHARTER SCHOOLS

Cindi Williams, Chair



WASHINGTON STATE
Charter School Commission
STUDENTS • INNOVATION • TRANSPARENCY

Grand Charter Bargain

Flexibility

Autonomy

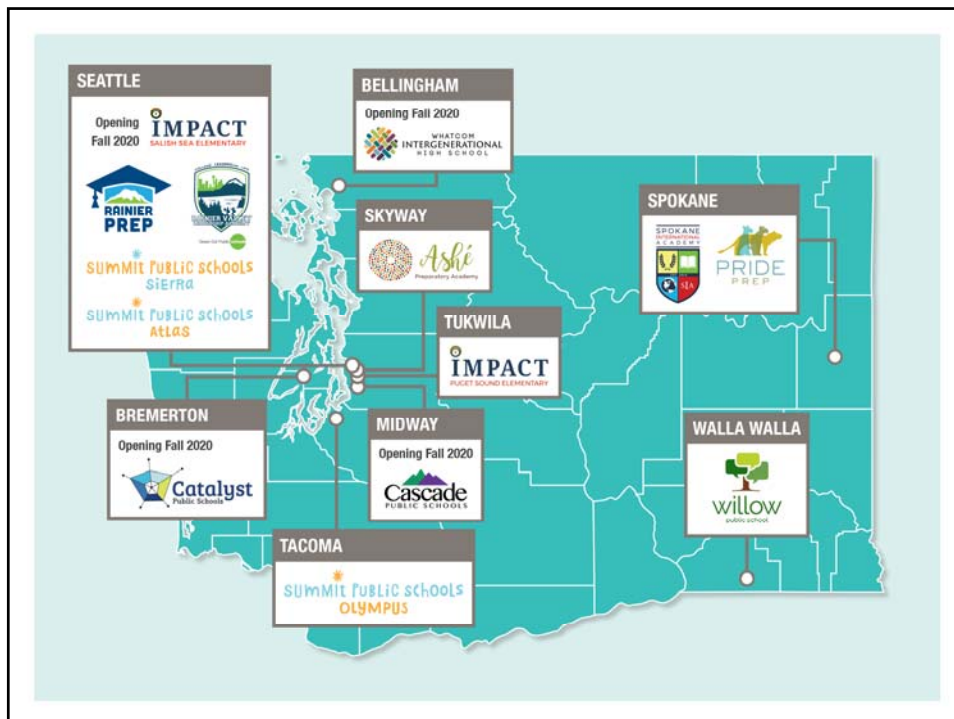
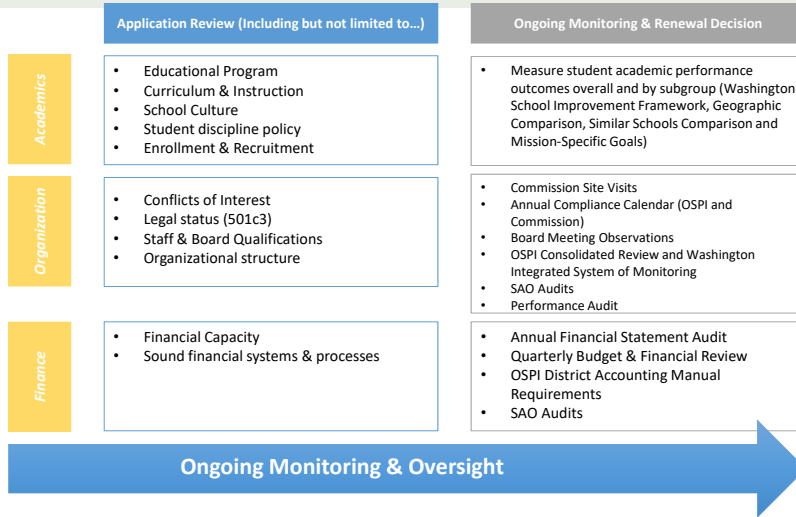
Creativity

Personalization

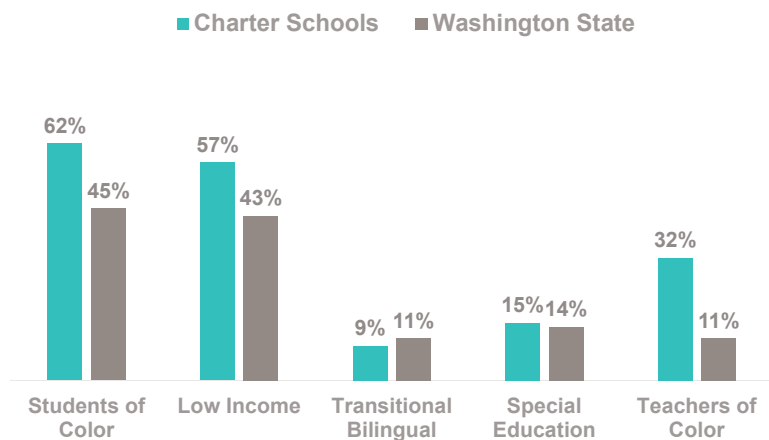


Greater Accountability
and Oversight

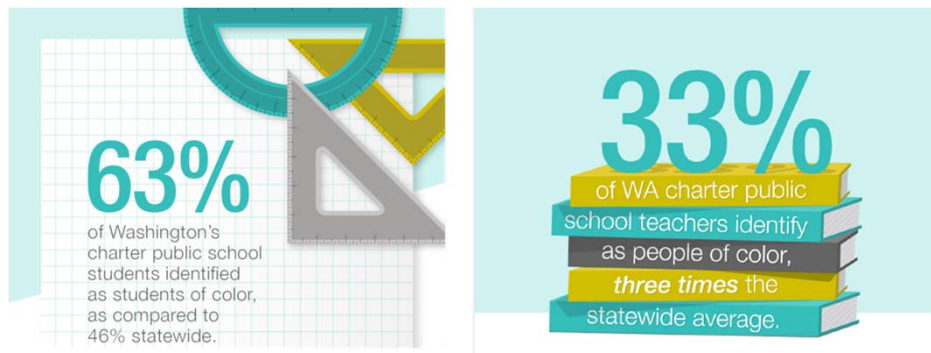
Performance Management Cycle



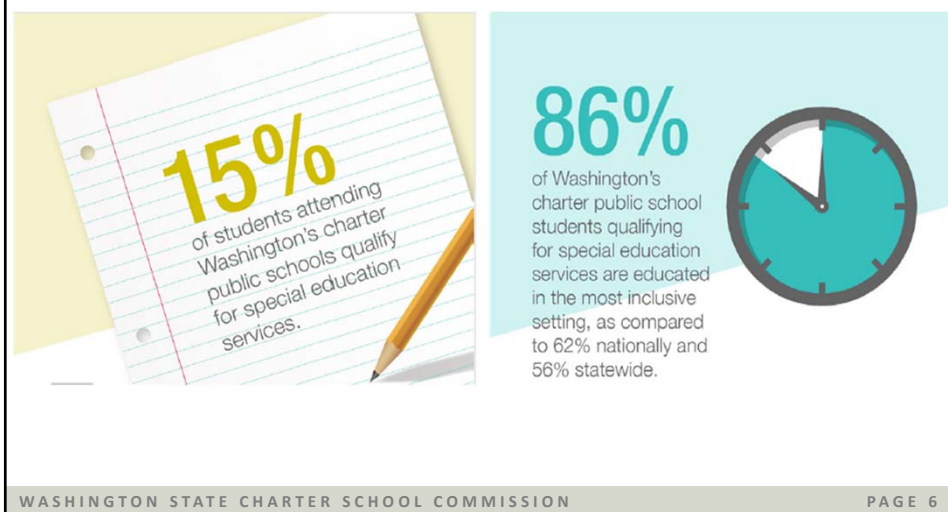
Who We Serve



Who We Serve



Who We Serve



Preliminary Results

Across Washington's charter public school sector in 2018:

- Fifth graders from low-income households met or exceeded grade level expectations on the SBAC math test at higher rates than peers in their local districts and statewide in the same subgroup.
- Hispanic/Latino sixth graders met or exceeded grade level expectations at higher rates than their Hispanic/Latino peers in local districts and statewide on both the ELA and math SBAC tests
- Black/African American eighth graders met or exceeded grade level expectations at higher rates than their Black/African American peers in local districts on the math SBAC test.
- Students at Washington's charter public high schools outperformed their peers in local districts and across the state by more than 10 percent on the 11th grade statewide science test (WCAS).

Washington's Charter Policy Landscape



CHARTER LAW

Washington's charter law is ranked third nationally in terms of overall quality



CAP & WINDOW

The current cap and window under the law allow for only 40 schools by the year 2021



FACILITIES

Rent/lease costs are 10-15% of operating budgets; schools are challenged to cover these costs and also build capital to buy/build permanent facility solutions



LEVY FUNDING

Charter public schools have no access to levy funds, creating a funding gap of approximately \$1-2K/student between charters and district schools



SPECIAL EDUCATION

Charter public schools serve more students with disabilities than the state average and often students have more acute needs; however, charters have the same funding formula as district schools

Highlights of Innovation



Ashé

Preparatory Academy



**RAINIER
PREP**



WHATCOM
INTERGENERATIONAL
HIGH SCHOOL



**SUMMIT
PUBLIC
SCHOOLS**

Commission Overview

COMMISSIONER	APPOINTED BY
Kristina Mayer (Port Townsend) Steve Sundquist (Seattle) Heather Lechner (Seattle)	Governor
Cindi Williams (Bellevue) Elizabeth Cohen (Issaquah)	Senate Majority Caucus
Dan Grimm (Puyallup)	Senate Minority Caucus
Margit McGuire (Seattle) VACANT	House Majority Caucus
Jessica Garcia	House Minority Caucus
Gayle Pauley	SPI Designee
Kaaren Heikes	SBE Chair Designee

Commission Overview

STAFF	TITLE
Joshua Halsey	Executive Director
Paula Kitzke	Director of School Quality and Accountability
Krystal Starwich	Director of New School Applications
Daniel Nyachuba	School Evaluation Analyst
Amanda Martinez	Executive Assistant
Katilin Payne	Office Assistant

Equity Policy



EDUCATIONAL EQUITY POLICY

The Washington State Charter School Commission (Commission) is committed to fostering innovation and ensuring excellence so that every student has access to and thrives in a high-quality public school.

As the state's only non-district and statewide charter school authority, the Commission's mission is to authorize high-quality charter public schools, especially schools designed to expand opportunities for students who have been underserved, and to ensure the highest standards of accountability and oversight for these schools.

The Commission is committed to closing opportunity gaps between the state's most and least privileged groups of students within the educational system. It has a moral obligation and legal obligation to cultivate charter schools where socio-economic status and protected group status such as race, gender, language, sexual orientation, national origin, and disability cease to be a predictor of academic and life outcomes. Educational equity benefits all students and our entire community.

The Commission will align its practices, policies and procedures and support the charter schools it authorizes and oversees to achieve and maintain educational equity.

With the implementation of this policy, the Commission will:

- Only approve charter schools designed to mitigate systemic barriers to improve access to students while demonstrating a financial and organizational model that maintains the school's financial viability and compliance with all legal requirements;
- Renew charter schools whose outcomes demonstrate increased student academic outcomes for all students while reducing the academic opportunity gap while demonstrating financial viability and legal compliance;
- Raise the achievement of all students in charter public schools while eliminating the predictability of student academic outcomes based on identities such as race, gender, language, sexual orientation, national origin, disability, socio-economic status and other protected group status;
- Identify and eliminate systemic barriers to improve access for students;
- Use equity in all decision-making;
- Advocate for equitable funding for all charter public schools at the state and philanthropic levels; and
- Annually review and adopt its Educational Equity Policy.

The Commission will utilize equity in all decision-making to ensure its work and the schools it authorizes will accomplish the above goals by implementing the following strategies:

- Recruit, hire, develop, and retain racially, linguistically, and culturally responsive, high-quality personnel that over time will more accurately reflect the student population

QUESTIONS?



WASHINGTON STATE
Charter School Commission
STUDENTS • INNOVATION • TRANSPARENCY

THANK YOU!



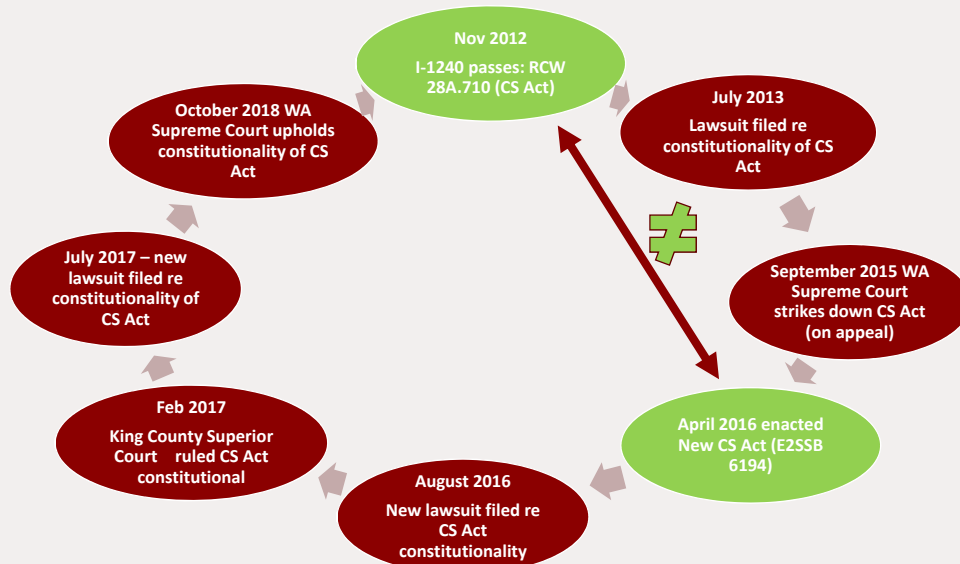
WASHINGTON STATE
Charter School Commission
STUDENTS • INNOVATION • TRANSPARENCY



Charter Public Schools

Kaaren Heikes, Director of Policy & Partnerships, SBE
July 10, 2019

Brief History of WA's Charter School Law



What is a WA Charter Public School?

- See “WA Charter School Facts” handout



WA Authorizers to-date

Authorizers

1. Charter School Commission (Statute empowers to authorize)
2. Spokane Public Schools (SBE authorizes)



Roster: WA Charter Schools*

18 total authorized to-date

Four have closed

Nine will be operating in 2019-20

14 will be operating in 2020-21

*See handout/roster



WA Charter School Commission (RCW 28A.710.070)

- Independent state agency (April 2013 – current, closed 12/15-4/16)
- Mission is to authorize high quality charter public schools throughout the state, especially schools that are designed to expand opportunities for at-risk students, and to ensure the highest standards of accountability and oversight for these schools.
- Required to administer the charter schools it authorizes in the same manner as a school district board of directors administers other schools, through its management, supervision, and enforcement of the charter contracts and pursuant to applicable law.



WA Charter School Commission (con't) RCW 28A.710.070



The commission shall consist of:

- Nine appointed members (three by Governor, three each by Senate and House; appointing authorities must ensure geographic diversity);
- The SPI or SPI's designee; and
- The chair of the SBE or the chair's designee.

Appointed members must collectively possess strong experience and expertise in public and nonprofit governance; management and finance; public school leadership, assessment, curriculum, and instruction; and public education law.

All appointed members shall have demonstrated an understanding of and commitment to charter schooling as a strategy for strengthening public education.

Charter School Commission Overview (con't)



The CS Commission meets monthly (full-day).

Commission Committees – Executive, Performance, Financial, and Authorization – also meet monthly.

Rigorous authorization process and criteria

Performance management cycle and performance frameworks:
academic, financial, organizational

Strategic planning, advocacy, equity policy development

Commission has two funding sources:

- 1) Oversight fee charged to all charter public schools it authorizes
- 2) Appropriations from WA Opportunity Pathways Account

SBE role vis-à-vis CSC Role



Authorizing role:

- CSC authorizes charter public schools (state-wide)
- SBE authorizes districts to authorize charter public schools (within their boundaries)

Reporting role:

- Collaboratively develop annual report

Regulatory role

SBE Statutory* Duties re: Charter Schools



1. “Authorize the authorizers” (except CSC): Screen, approve, contract with, and oversee the performance and effectiveness of school districts that authorize charter schools within their boundaries.
2. Include all charter schools in its public school system oversight, including accountability measures, to the same extent as other public schools.
3. CS Commission member: SBE chair, or designee.
4. Establish a statewide authorizer oversight fee.

*RCW 28A.710

SBE Statutory CS Duties (con't)



5. "Keep official count:" Certify charter school applications approved by CSC or a district authorizer between approval and contract ratification (to ensure "room" within the 40 maximum allowed by law).
6. Process petitions for charter contract transfers (review and determine whether to grant).
7. Issue an annual charter school report, in collaboration with the CS Commission.

Annual Report on Charter Schools



RCW 28A.710.250 directs the State Board of Education, in collaboration with the Charter School Commission, to issue an annual report to the Governor, the Legislature, and the public, by December 1st.* The annual report must include:

- I. The performance of the state's charter schools during the preceding school year, including a comparison of the performance of charter school students with the performance of academically, ethnically, and economically comparable groups of students in other public schools;
- II. SBE's assessment of the successes, challenges, and areas for improvement in meeting the purposes of the Washington Charter Public Schools Act (RCW 28A.710), including the board's assessment of the sufficiency of funding for charter schools, the efficacy of the formula for authorizer funding; and
- III. Any suggested changes in state law or policy necessary to strengthen the state's charter schools.



Annual Charter School Report (con't)

SBE's annual report must be based on the reports submitted by each authorizer as well as any additional relevant data compiled by the state board of education.

Each authorizer must submit an annual report to SBE, according to a timeline, content, and format specified by SBE that includes:

- (a) The authorizer's strategic vision for chartering and progress toward achieving that vision;
- (b) The academic and financial performance of all operating charter schools under its jurisdiction, including the progress of the charter schools based on the authorizer's performance framework;
- (c) The status of the authorizer's charter school portfolio, identifying all charter schools in each of the following categories: (i) Approved but not yet open; (ii) operating; (iii) renewed; (iv) transferred; (v) revoked; (vi) not renewed; (vii) voluntarily closed; or (viii) never opened;
- (d) The authorizer's operating costs and expenses detailed in annual audited financial statements that conform with generally accepted accounting principles; and
- (e) The services purchased from the authorizer by the charter schools under its jurisdiction under RCW 28A.710.110, including an itemized accounting of the actual costs of these services.



Fifth Year Report

RCW 28A.710.250(3) – Together with the issuance of the annual report following the fifth year after there have been charter schools operating for a full school year, **the state board of education, in collaboration with the commission, shall submit a recommendation regarding whether or not the legislature should authorize the establishment of additional charter public schools (December 2021).**

RCW 28A.710.150 –

- (1) A maximum of 40 charter public schools may be established under this chapter over the five-year period commencing with April 3, 2016.

Questions?

- Discussion?



A charter public school in Washington State is a public school that, per RCW 28A.710:

1. Is operated separately from the common school system, as a public alternative to traditional common schools (“public schools that are not common schools”);
2. Is a Washington nonprofit public benefit corporation that is nonsectarian and nonreligious with tax exempt status under section 501(c)(3) of the federal internal revenue code;
3. Has an approved charter school application that includes at least the 32 elements required by RCW 28A.710.130, approved by an “authorizer,” which is either the Washington Charter School Commission or a school district approved by the State Board of Education;
4. Is governed by a charter school board according to the terms of a renewable, five-year charter contract executed with an approved authorizer; all charter school board members and Commission members must file annual personal financial affairs statements with the Public Disclosure Commission;
5. Is subject to the supervision of the OSPI and SBE, including accountability measures, to the same extent as other public schools;
6. Is open to all children free of charge and by choice, regardless of a student’s location of residence, with admission based only on age group, grade level, and school enrollment capacity;
7. Must provide a program of basic education that meets the goals in RCW 28A.150.210, including instruction in the essential academic learning requirements, and participate in the statewide student assessment system;
8. May offer any program or course of study that any other public school may offer, including one or more of grades kindergarten through twelve;
9. Is subject to the performance improvement goals adopted by the State Board of Education;
10. Is required to employ certificated instructional staff except in specific exceptional cases;
11. Functions as a local education agency under applicable federal laws and regulations and is responsible for meeting the requirements of local education agencies and public schools under those federal laws and regulations, e.g., FERPA, IDEA, ESEA;
12. Must comply with local, state, and federal health, safety, parents' rights, civil rights, and nondiscrimination laws applicable to school districts;
13. Must comply with all state statutes and rules made applicable to the charter school in the school's charter contract. For the purpose of allowing flexibility to innovate in areas such as scheduling, personnel, funding, and educational programs to improve student outcomes and academic achievement, charter schools are not subject to, and are exempt from, state statutes and rules applicable to school districts and school district boards of directors (except as provided otherwise by the Charter School Act or a charter contract);
14. Is required to adhere to generally accepted accounting principles and be subject to financial examinations and audits as determined by the state auditor, including annual audits for legal and fiscal compliance; comply with the open public meetings act and public records requirements, and provide an annual performance report.
15. Funded by a mix of federal and state funds (from the state’s Opportunity Pathways Account, which contains lottery funds); do not receive local levy funds.

Roster: Washington State Charter Public Schools (7/1/19)

Charter School	Authorizer	Location	SY opened/closed	Grades served	Focus
Cascade: Midway	CSC	Midway	2020	9-12	
Catalyst: Bremerton	CSC	Bremerton	2020	K-8	
First Place Scholars	CSC	Seattle	2014/2015	K-5	
Green Dot Excel	CSC	Kent	2016/2019	7-9	College prep and STEM
Green Dot Destiny MS	CSC	Tacoma	2016/2019	6-8	HS prep and college-ready pathways
Impact/Puget Sound Elementary	CSC	Tukwila	2018	K-5	College Prep
Impact/Salish	CSC	Seattle	2020	K-5	College Prep
Lumen High School	Spokane SD	Spokane	2020	9-12	High academic standards, specialized EL center, and wrap-around supports for teen parents
PRIDE Prep	Spokane SD	Spokane	2016	6-12	College prep, leadership development
Rainier Valley Leadership Academy	CSC	SE Seattle	2017	6-12	College-going culture, personalized learning, family partnership
Rainier Prep	CSC	Seattle	2016	5-8	College prep
SOAR Academy	CSC	Tacoma	2015/2019	K-5	HS Prep, college prep, leadership development
Spokane International Academy	Spokane SD	Spokane	2016	K-8	Rigorous, authentic learning and global competence
Summit Atlas	CSC	W Seattle	2017	6-12	College readiness, small school environment
Summit Olympus	CSC	Tacoma	2016	9-12	College readiness, small school environment
Summit Sierra	CSC	Seattle	2016	9-12	College readiness, small school environment
Whatcom Intergenerational High School	CSC	Bellingham	2020	9-12	
Willow Public School	CSC	Walla Walla	2018	6-8	College and career readiness, project-based learning

CLOSED